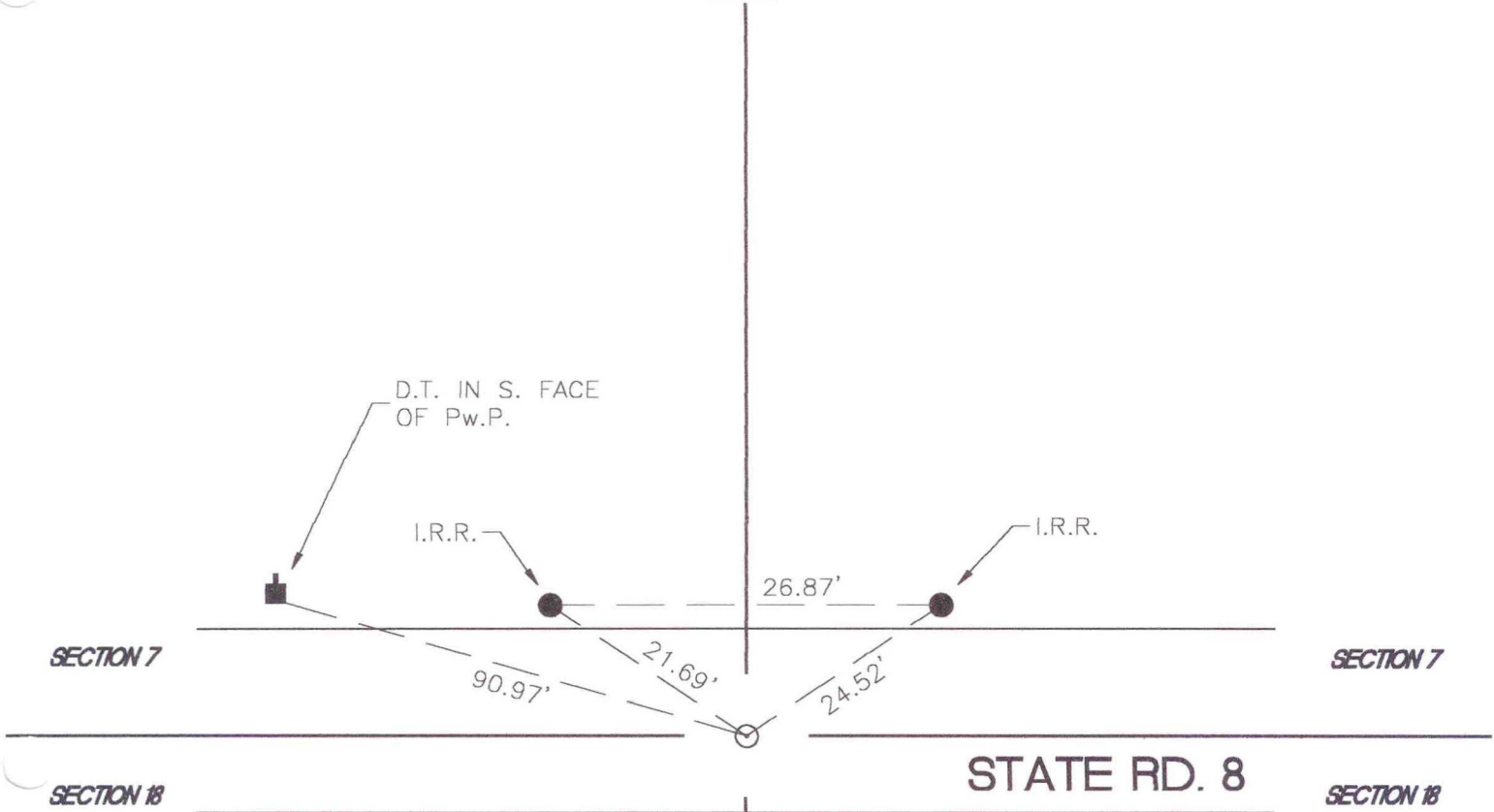


CENTER TOWNSHIP

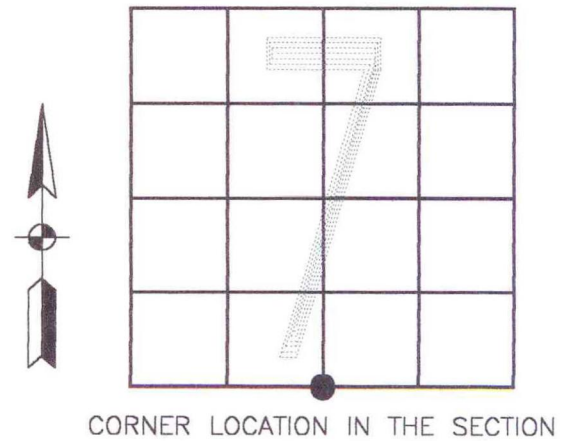
T 33 N, R 2 W

J3



MONUMENT: CROSSING BOLT
CORNER OF: RECORD USE
PARTY: DWC \ DPS
DATE: 10-11-2000

COMMENTS: BOLT IS LOCATED 6.3'± SOUTH OF CENTERLINE OF ST. RD. 8



CORNER LOCATION IN THE SECTION