

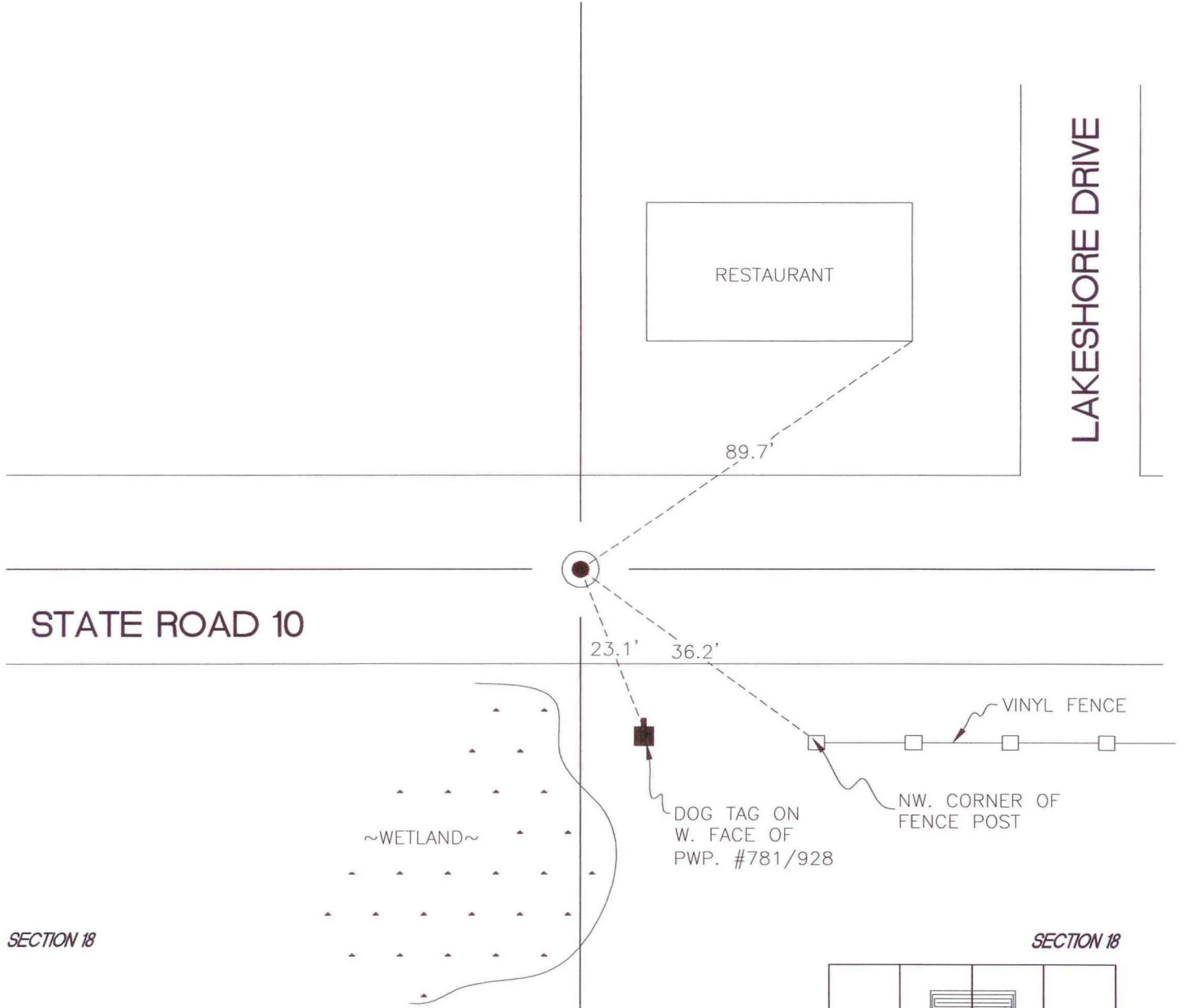
NORTH BEND TOWNSHIP

T 32 N, R 1 W

J3

SECTION 7

SECTION 7



SECTION 18

SECTION 18

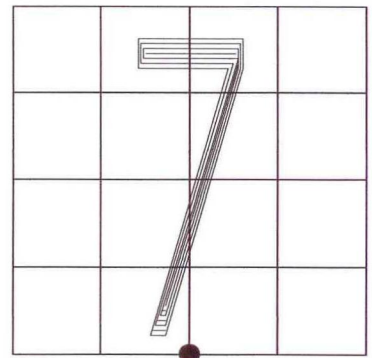
MONUMENT: 3/8" IRON ROD IN MONUMENT BOX

CORNER OF: RECORD USE

PARTY: DWC/JL

DATE: 11-26-2008

COMMENTS: SET ON 02/22/1991 BY VHJ/DWC OF TERRITORIAL ENGINEERING, LLC



CORNER LOCATION IN THE SECTION

J3