

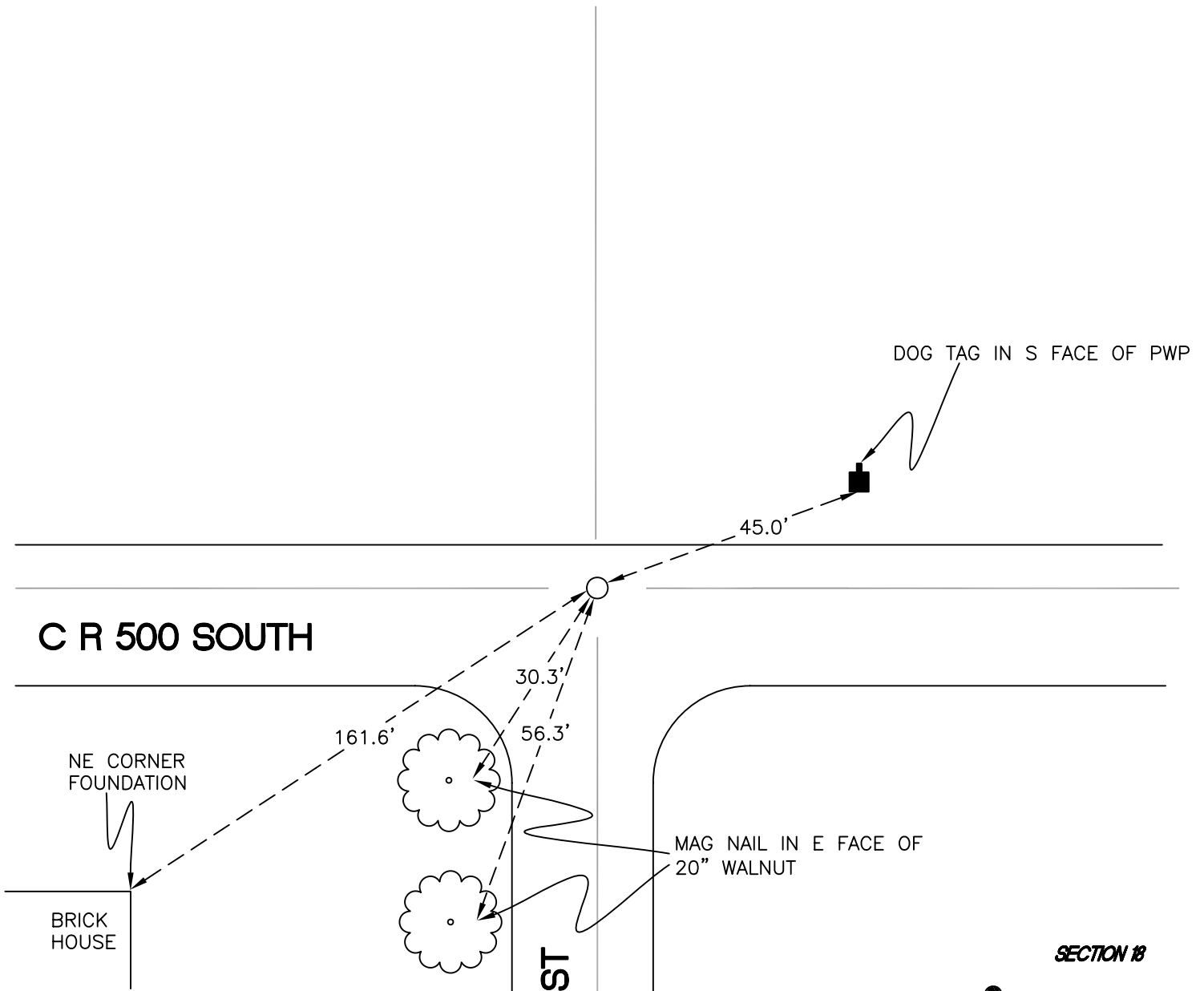
# CALIFORNIA TOWNSHIP

T 32 N, R 2 W

## J3

SECTION 7

SECTION 7



SECTION 18

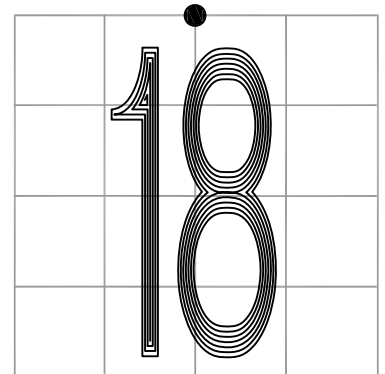
SECTION 18

MONUMENT: 2" IRON PIPE

PARTY: JL/AO

DATE: 7/23/12

COMMENTS: 2.5' N OF  $\phi$  OF 500 S; 2' E OF  $\phi$  OF 50 E.  
RR SPIKE FOUND IN 1984 BY RLP REPLACED  
WITH 2" IRON PIPE.



CORNER LOCATION IN THE SECTION

## J3