

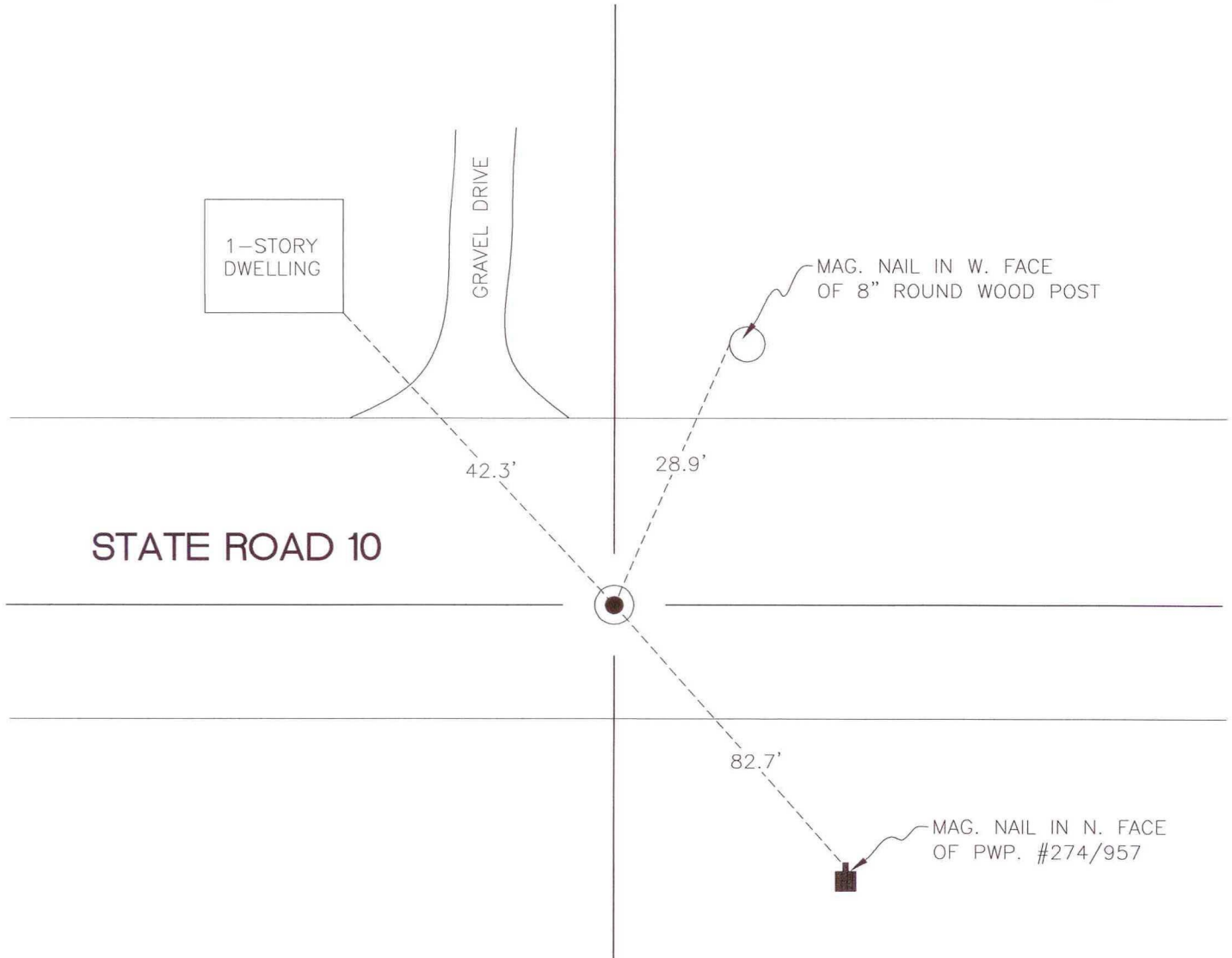
# NORTH BEND TOWNSHIP

T 32 N, R 1 W

## J4

SECTION 7

SECTION 7



SECTION 18

SECTION 18

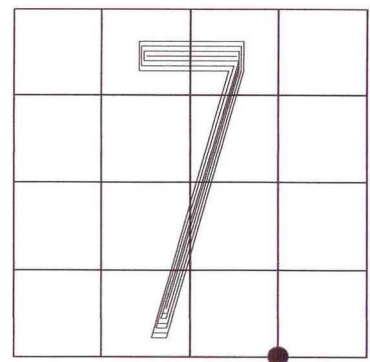
MONUMENT:  $\frac{3}{8}$ " IRON ROD IN MONUMENT BOX

CORNER OF: RECORD  USE

PARTY: DWC/JL

DATE: 12-17-2008

COMMENTS: 2' S. OF  $\phi$  OF S.R.10



CORNER LOCATION IN THE SECTION

## J4