

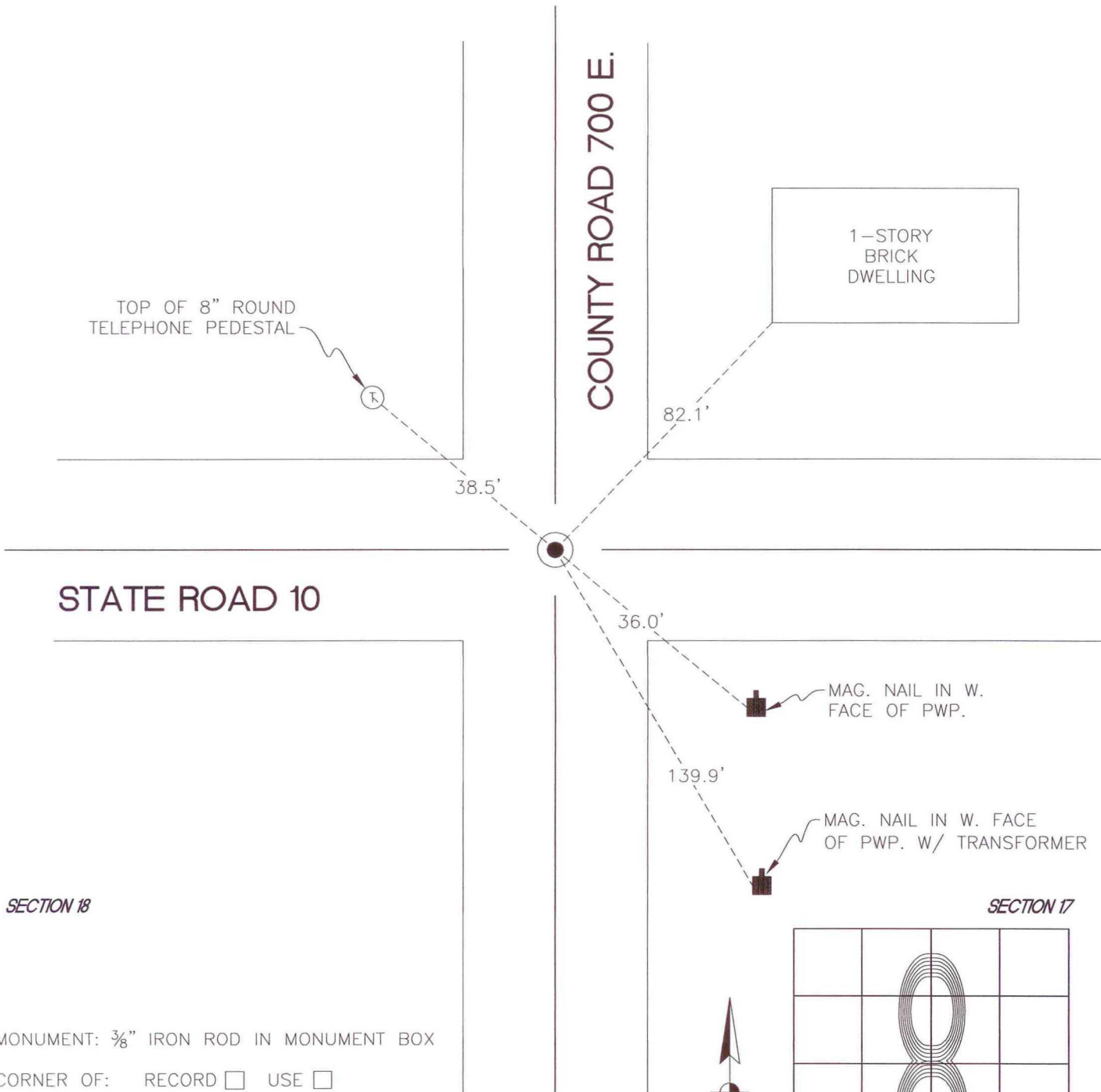
NORTH BEND TOWNSHIP

T 32 N, R 1 W

J5

SECTION 7

SECTION 8



STATE ROAD 10

COUNTY ROAD 700 E.

TOP OF 8" ROUND TELEPHONE PEDESTAL

1-STORY BRICK DWELLING

MAG. NAIL IN W. FACE OF PWP.

MAG. NAIL IN W. FACE OF PWP. W/ TRANSFORMER

SECTION 18

SECTION 17

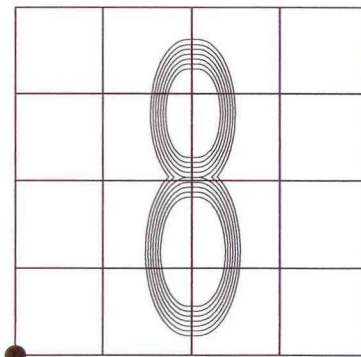
MONUMENT: 3/8" IRON ROD IN MONUMENT BOX

CORNER OF: RECORD USE

PARTY: DWC/JL

DATE: 11-26-2008

COMMENTS:



CORNER LOCATION IN THE SECTION

J5