

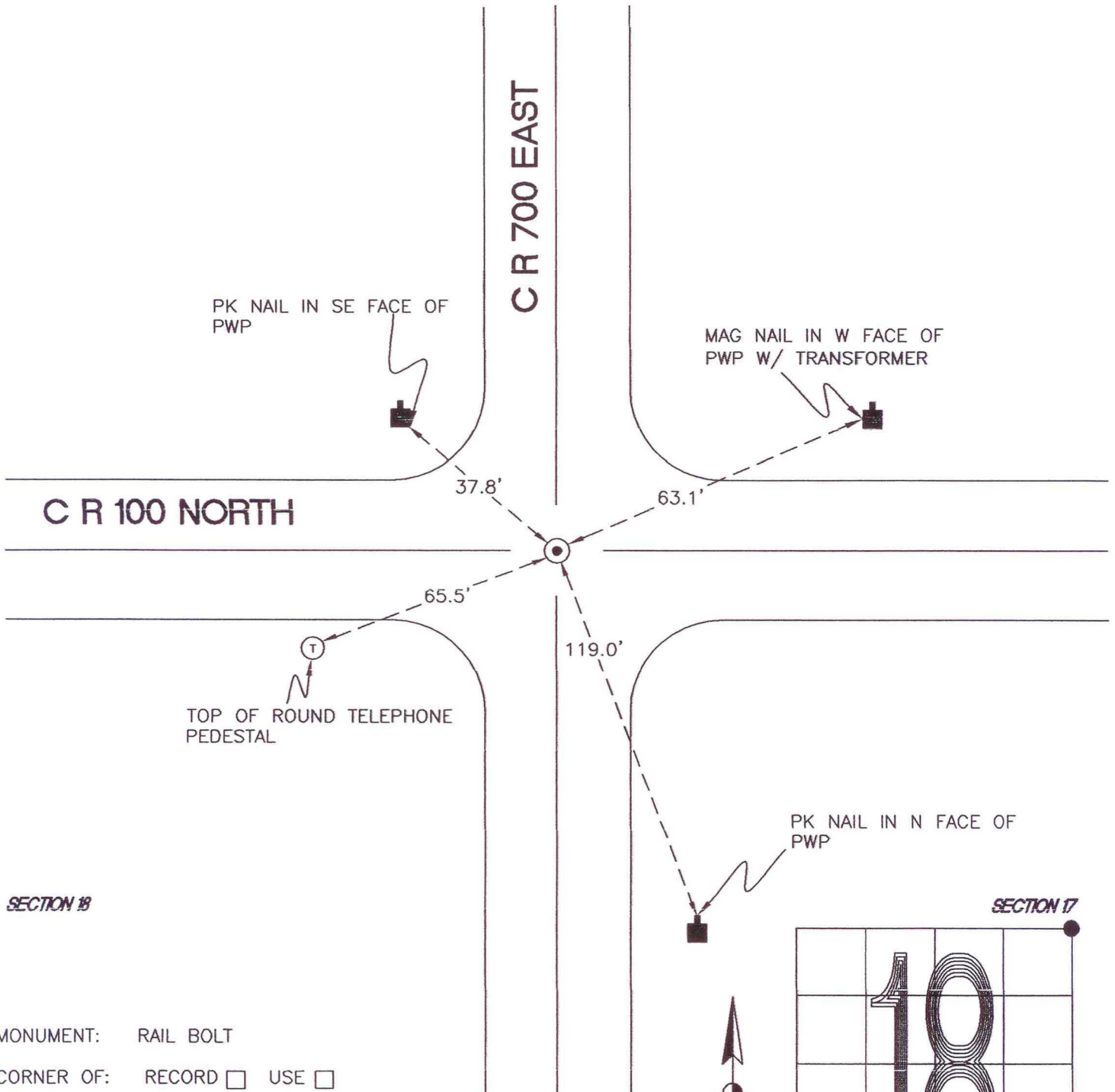
# WASHINGTON TOWNSHIP

T 33 N, R 1 W

## J5

SECTION 7

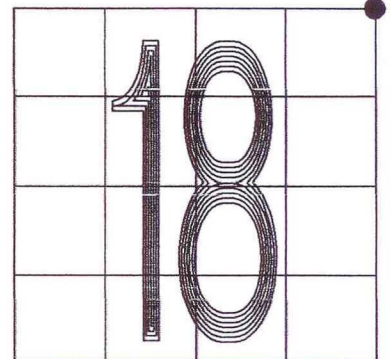
SECTION 8



SECTION 18

SECTION 17

MONUMENT: RAIL BOLT  
CORNER OF: RECORD  USE   
PARTY: JL/PM  
DATE: 11-15-2007  
COMMENTS: 2" BELOW GRADE  
DID NOT EXCAVATE FOR STONE UNDER  
THE RAIL BOLT AS INDICATED IN 1983



CORNER LOCATION IN THE SECTION

## J5