

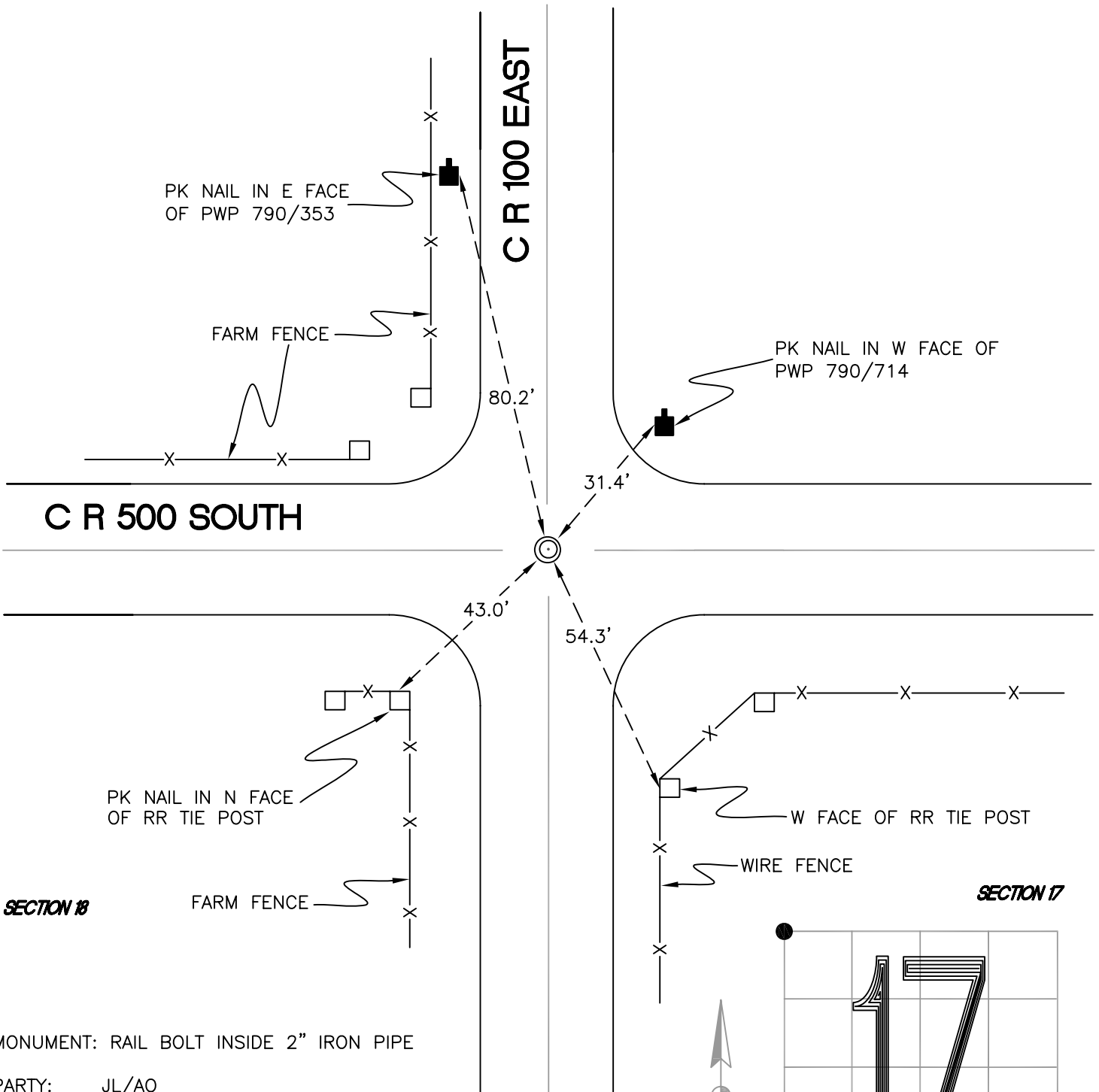
# CALIFORNIA TOWNSHIP

T 32 N, R 2 W

## J5

SECTION 7

SECTION 8

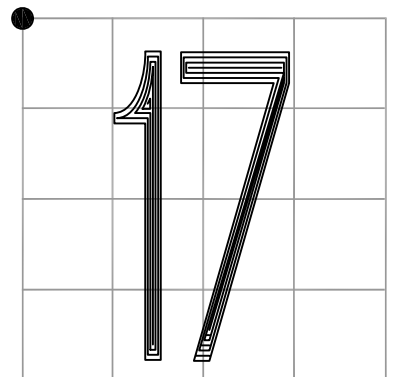


MONUMENT: RAIL BOLT INSIDE 2" IRON PIPE

PARTY: JL/AO

DATE: 7/12/12

COMMENTS: FOUND BY VHJ/SJF IN 1983 AND RLP IN 1984.



CORNER LOCATION IN THE SECTION

## J5