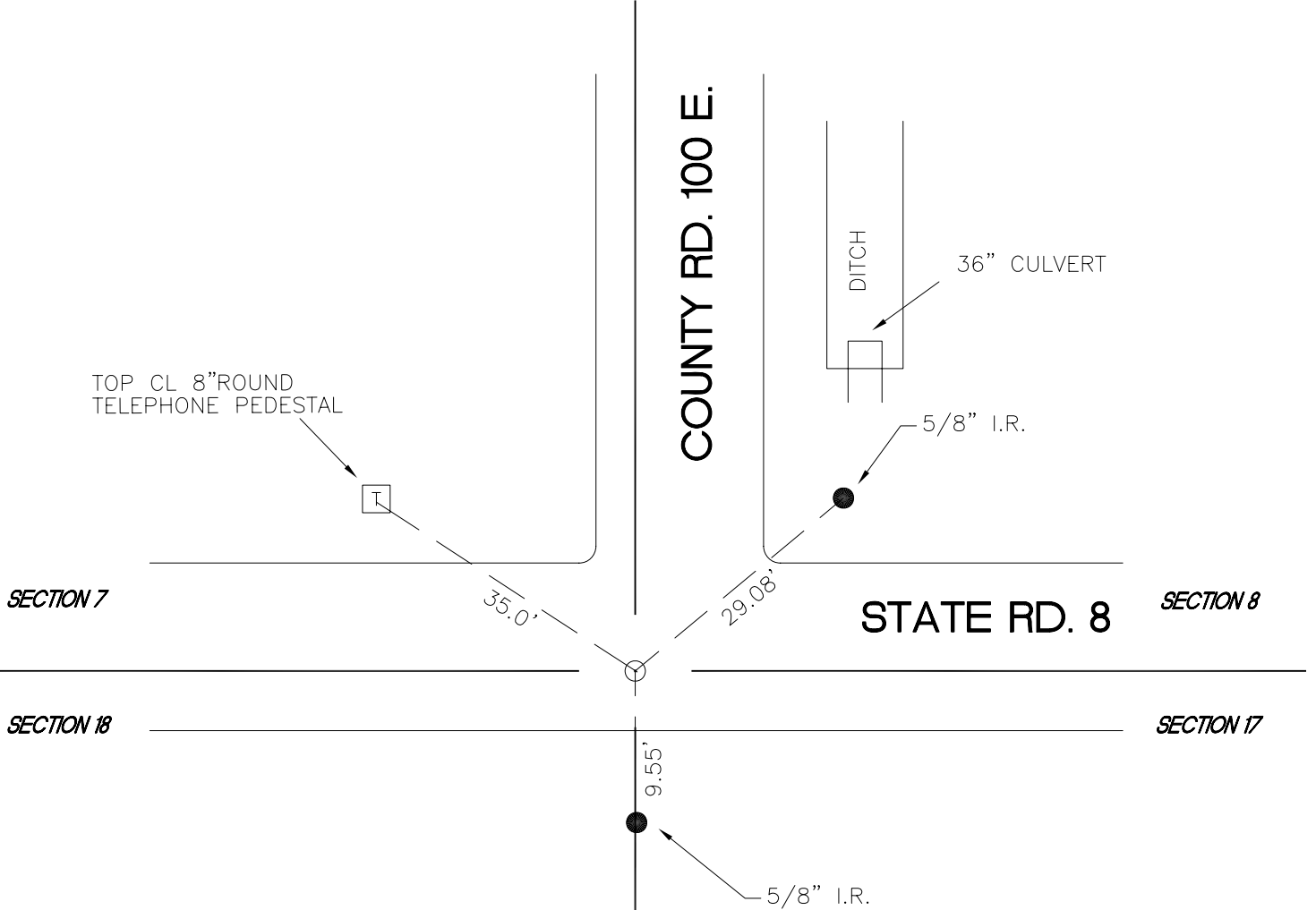


CENTER TOWNSHIP

T 33 N, R 2 W

J5



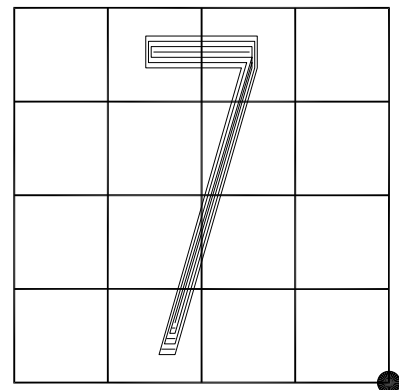
MONUMENT: CROSSING BOLT

CORNER OF: RECORD USE

PARTY: DPS/AJR

DATE: NOVEMBER 2017

COMMENTS: BOLT LOCATED 2.7'± SOUTH OF CENTERLINE OF ST. RD. 8 AND 6.0'± W. CENTERLINE COUNTY RD.100 E.



CORNER LOCATION IN THE SECTION