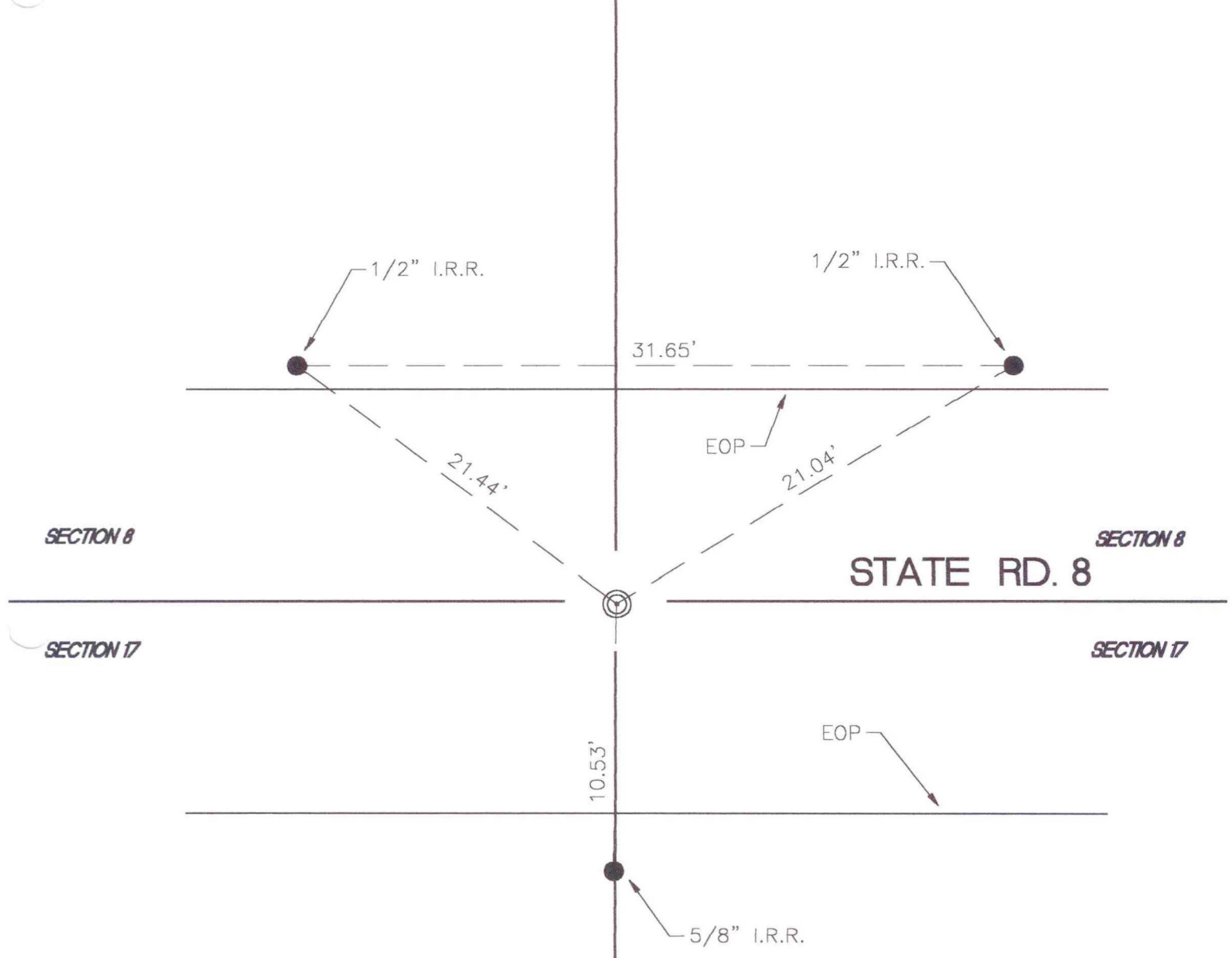


CENTER TOWNSHIP

T 33 N, R 2 W

J7



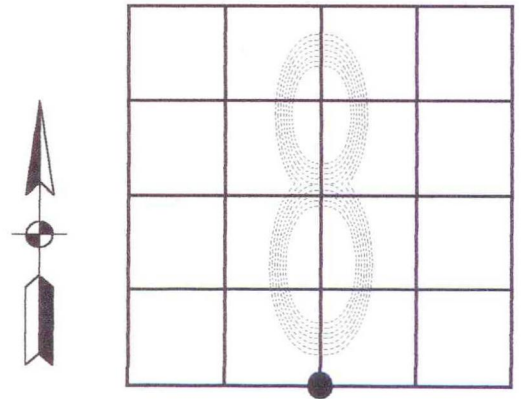
MONUMENT: CROSSING BOLT

CORNER OF: RECORD USE

PARTY: DWC \ DPS

DATE: 10-11-2000

COMMENTS: POINT LOCATED 2.25' SOUTH
OF CENTERLINE OF ROAD



CORNER LOCATION IN THE SECTION