

NORTH BEND TOWNSHIP

T 32 N, R 1 W

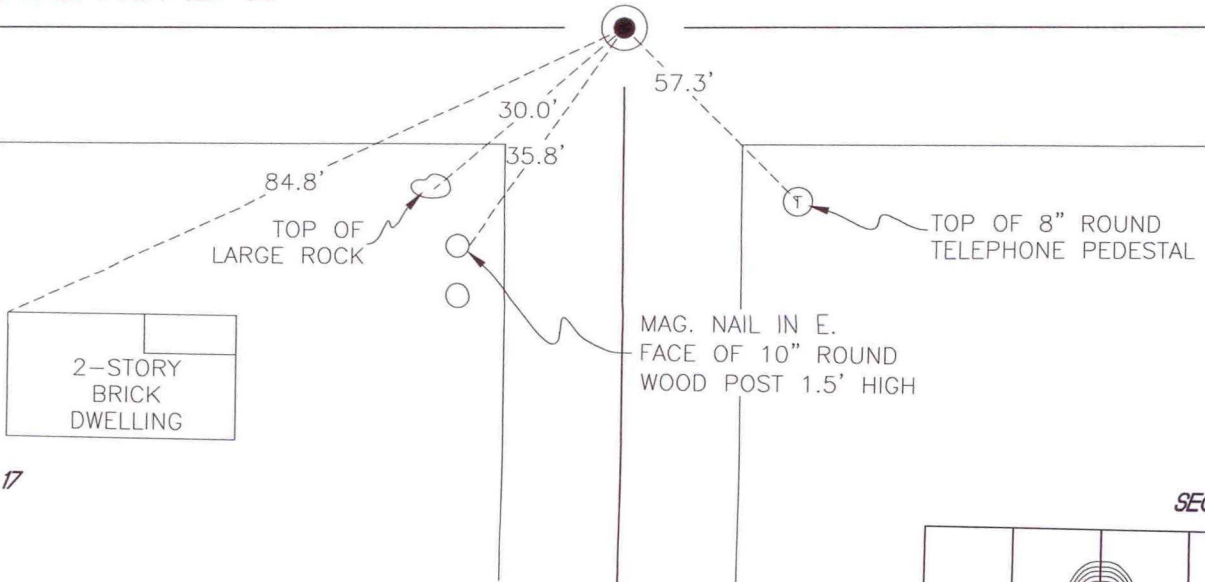
J7

SECTION 8

SECTION 8

COUNTY ROAD 750 E.

STATE ROAD 10



SECTION 17

SECTION 17

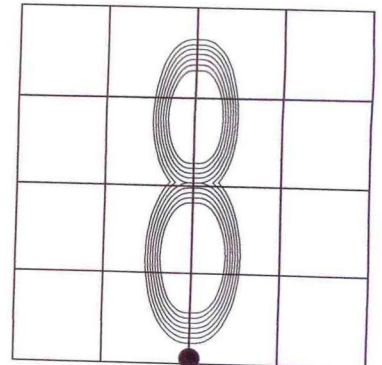
MONUMENT: 5/8" IRON ROD IN MONUMENT BOX

CORNER OF: RECORD USE

PARTY: DWC/JL

DATE: 12-17-2008

COMMENTS:



CORNER LOCATION IN THE SECTION