

# NORTH BEND TOWNSHIP

T 32 N, R 1 W

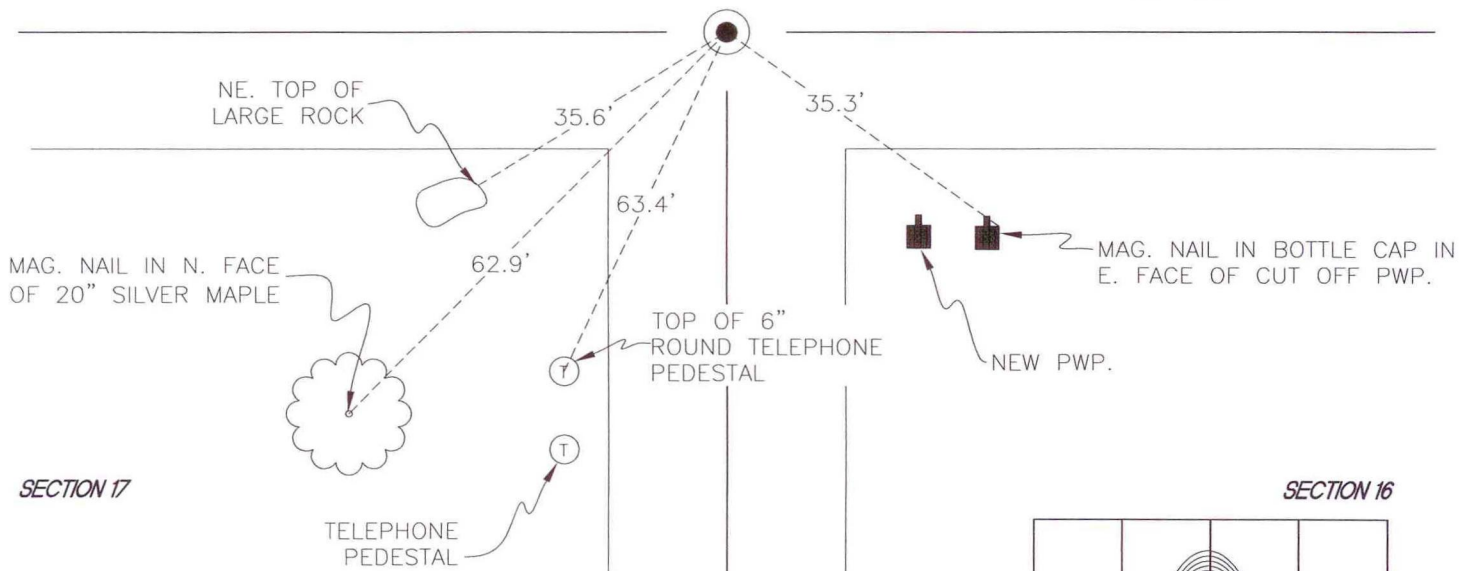
## J9

SECTION 8

SECTION 9

COUNTY ROAD 800 E.

STATE ROAD 10



SECTION 17

SECTION 16

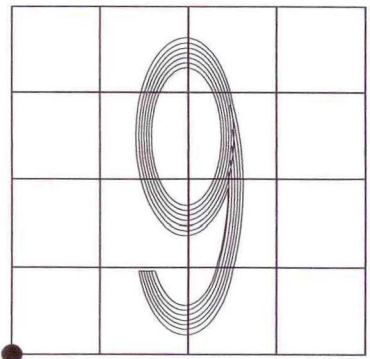
MONUMENT: 5/8" IRON ROD IN MONUMENT BOX

CORNER OF: RECORD  USE

PARTY: DWC/JL

DATE: 11-26-2008

COMMENTS:



CORNER LOCATION IN THE SECTION

## J9