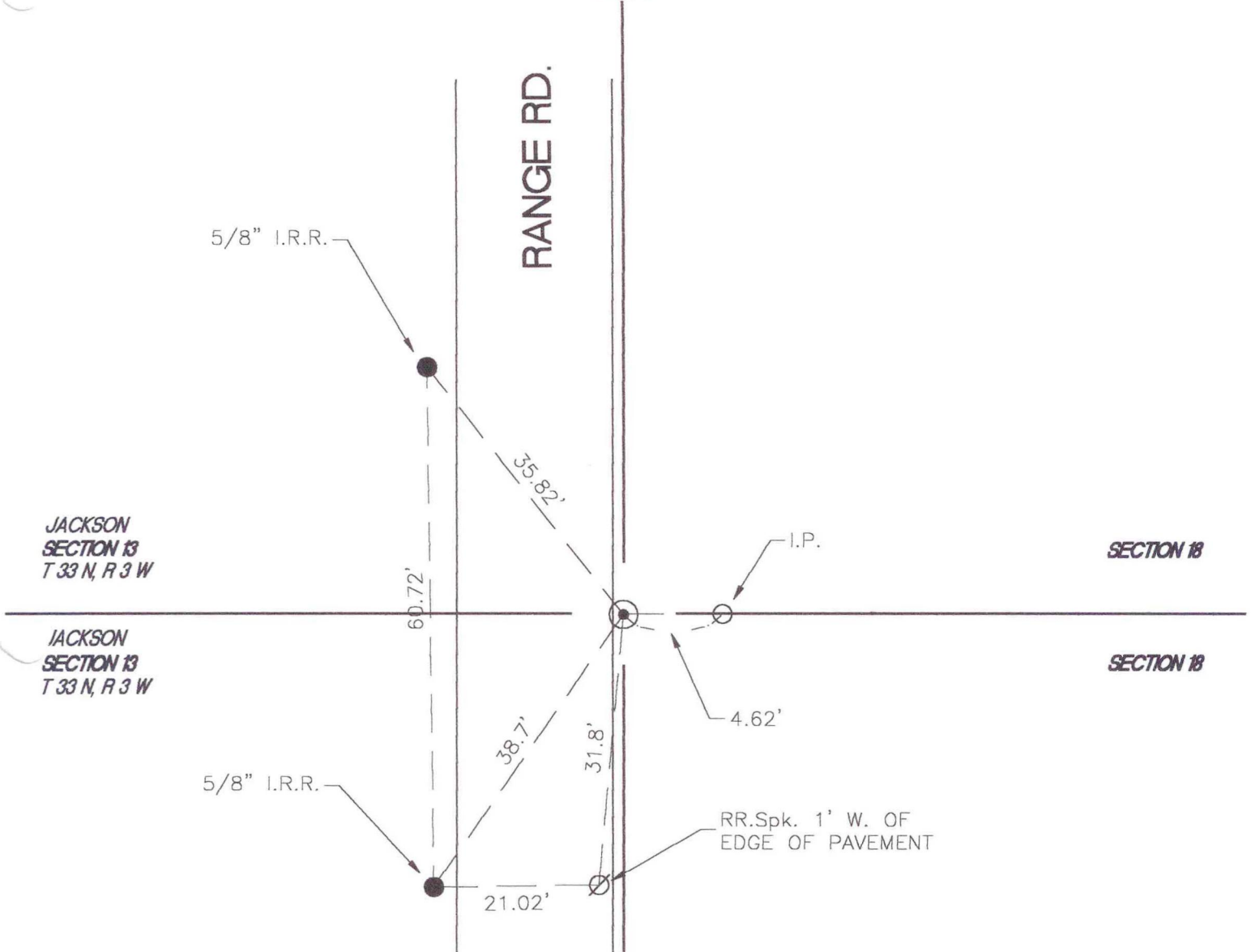


CENTER TOWNSHIP

T 33 N, R 2 W

L1



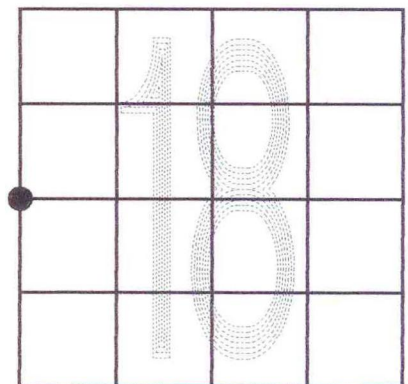
MONUMENT: 2" CAST IRON PIPE

CORNER OF: RECORD USE

PARTY: DWC \ DPS

DATE: 10-9-2000

COMMENTS: IRON ROD IN 2" CAST IRON PIPE, 0.9' BELOW SURFACE



CORNER LOCATION IN THE SECTION