

SECTION CORNER REFERENCE

SECTION 15 TOWNSHIP 34-N RANGE 2-W
(Description of Corner Location) WEST QUARTER CORNER

L13

L13

DAVIS TWP.,
STARKE COUNTY, INDIANA

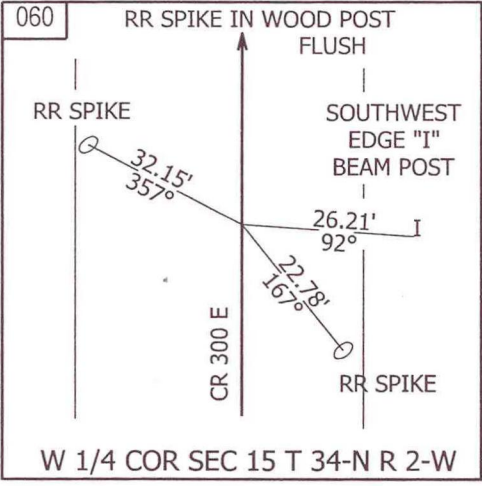


COORDINATES

- NAD '83 IN E. ZONE
- NAD '83 IN W. ZONE
- LOCAL GRID

Units: US FEET
 Pt.#: 060
 N: 14,538.155
 E: 4,705.637

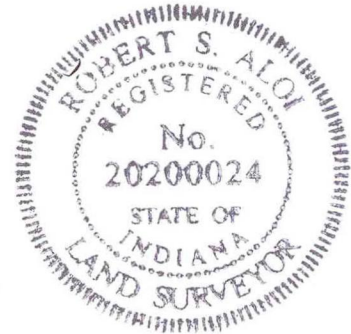
TYPE OF MON.: RR SPIKE IN WOOD POST
 DEPTH: FLUSH
 UNCERTAINTY: _____
 BY: COUNTY SURVEYOR
 DATE: JULY 2009
 DES.NO.: 0500068



STATE FORM 40180 (R2/2-04)

REFERENCED BY: INDOT

COMMENTS: MONUMENT AND REFERENCES
SAME AS IN 1985.



L13