

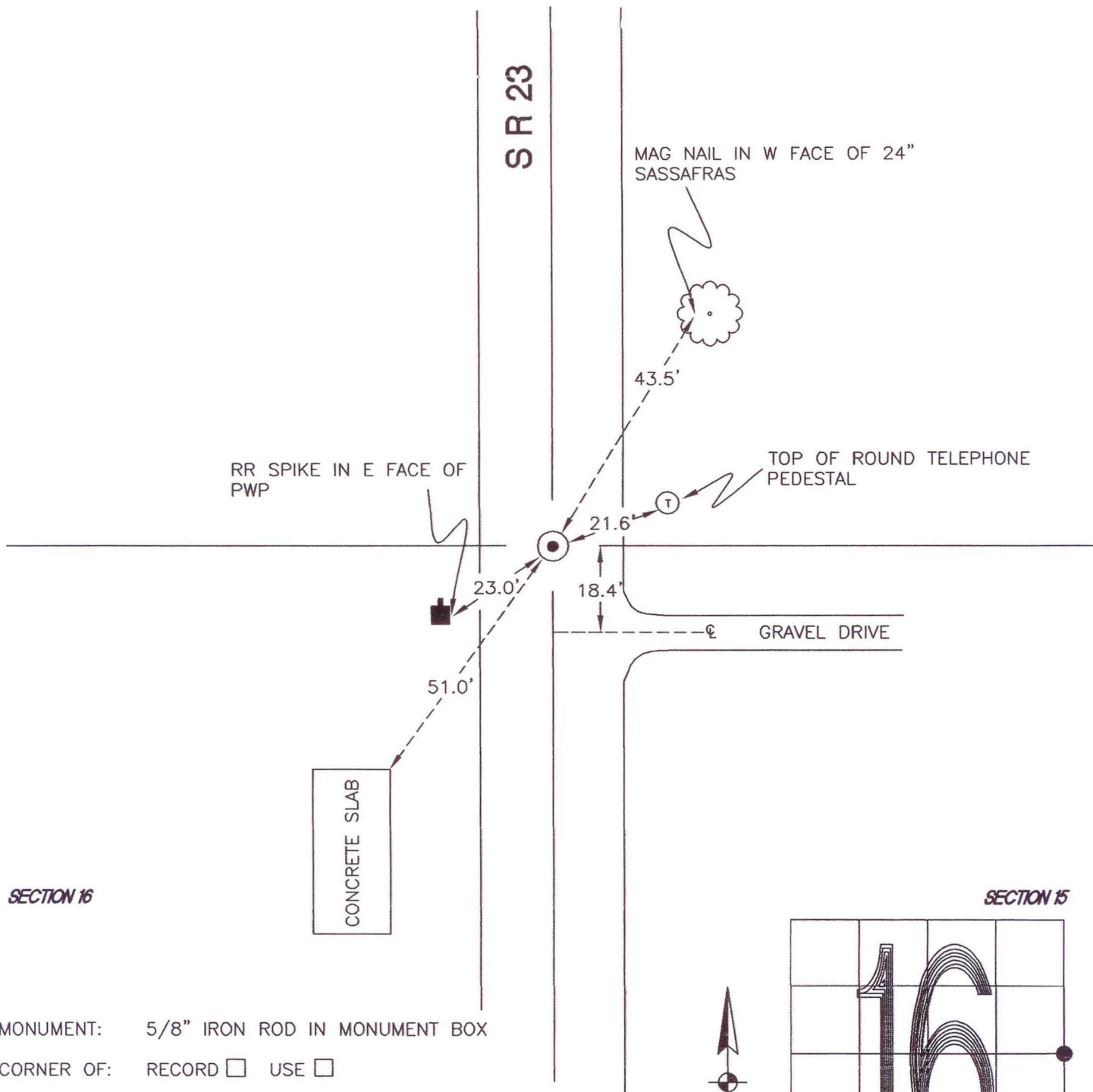
WASHINGTON TOWNSHIP

T 33 N, R 1 W

L13

SECTION 16

SECTION 15



SECTION 16

SECTION 15

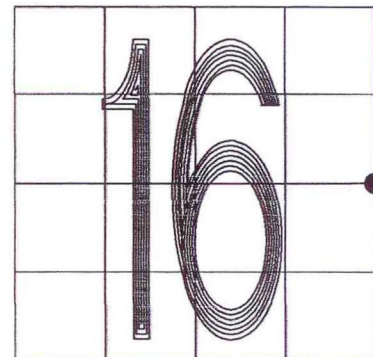
MONUMENT: 5/8" IRON ROD IN MONUMENT BOX

CORNER OF: RECORD USE

PARTY: JL/PM

DATE: 11-15-2007

COMMENTS:



CORNER LOCATION IN THE SECTION

L13