

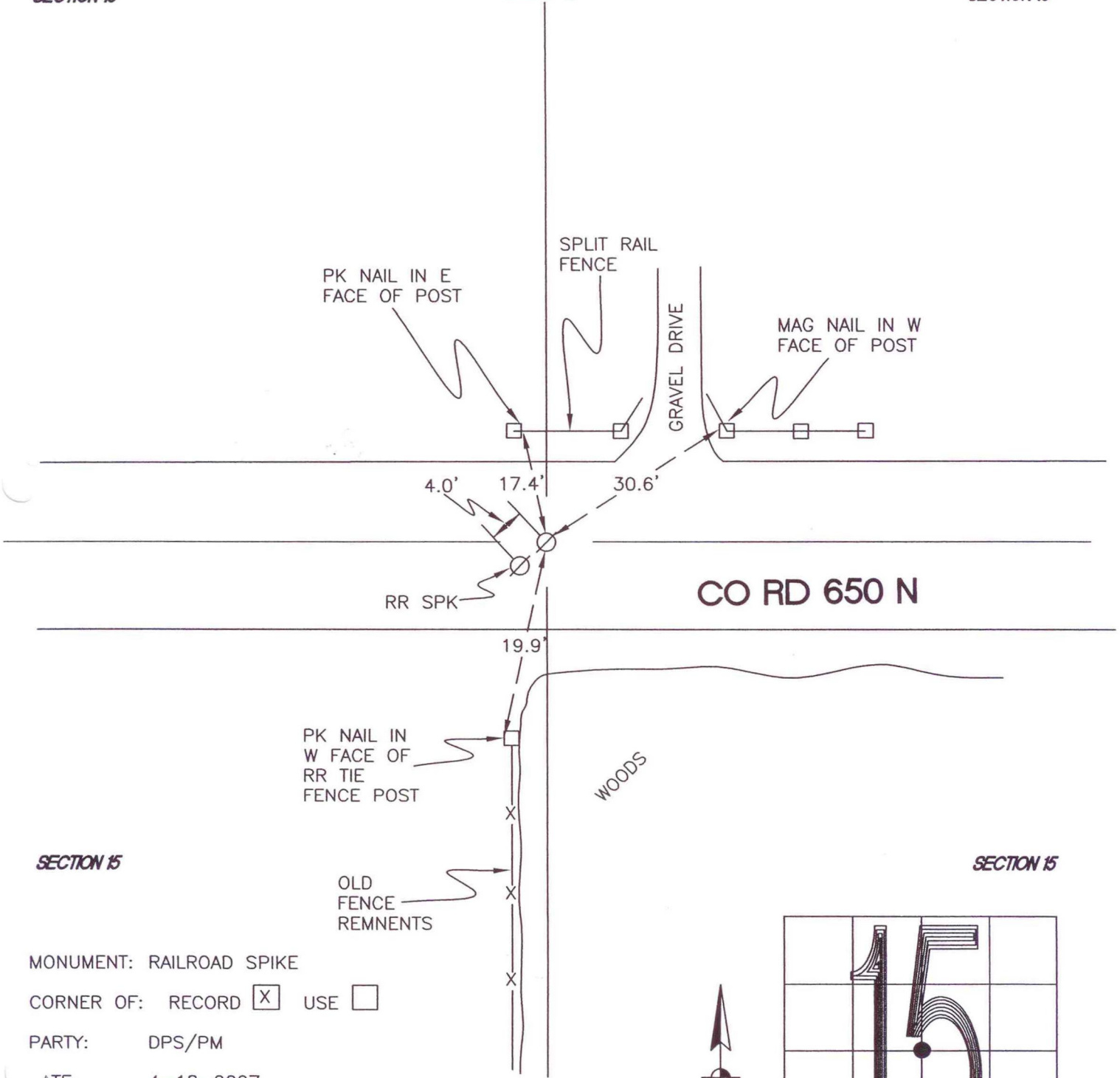
OREGON TOWNSHIP

T 34 N, R 1 W

L15

SECTION 15

SECTION 15



SECTION 15

SECTION 15

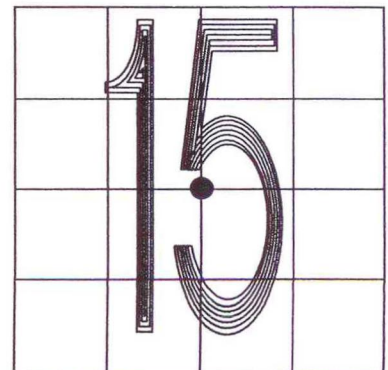
MONUMENT: RAILROAD SPIKE

CORNER OF: RECORD USE

PARTY: DPS/PM

DATE: 4-18-2007

COMMENTS: SECTION 15 WAS BROKEN DOWN IN 1987 BY SECTION CORNER SUBDIVISION IN SURVEY FOR VAN BLAIRCOM DATED 5-11-1987 BY TERRITORIAL ENGINEERING



L15

CORNER LOCATION IN THE SECTION