

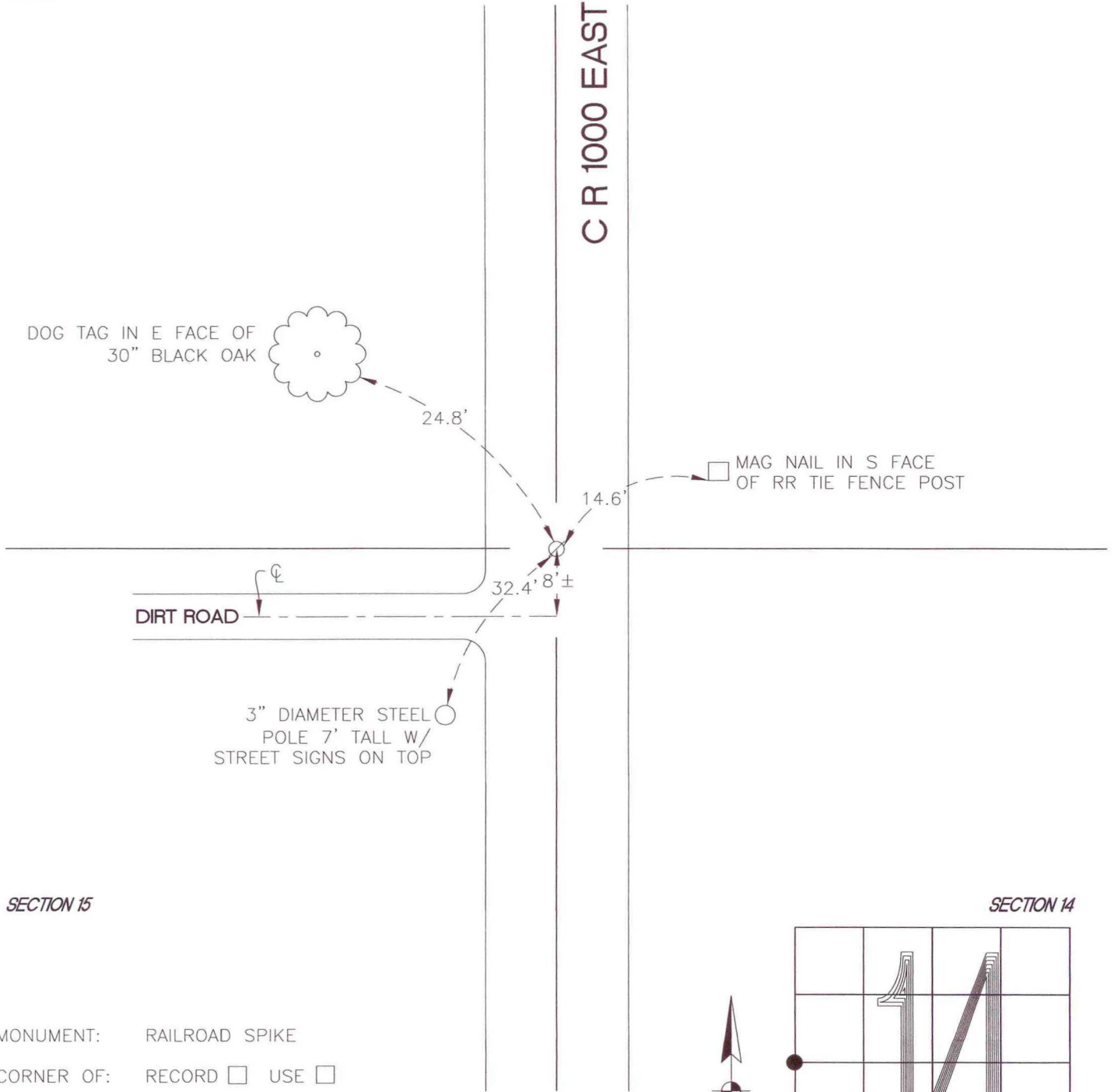
# NORTH BEND TOWNSHIP

T 32 N, R 1 W

## L17

SECTION 15

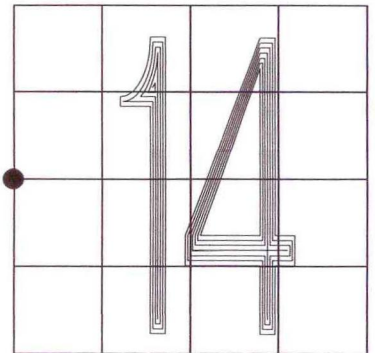
SECTION 14



SECTION 15

SECTION 14

MONUMENT: RAILROAD SPIKE  
CORNER OF: RECORD  USE   
PARTY: DWC/JL  
DATE: 11-25-2008  
COMMENTS: FLUSH



CORNER LOCATION IN THE SECTION

## L17