

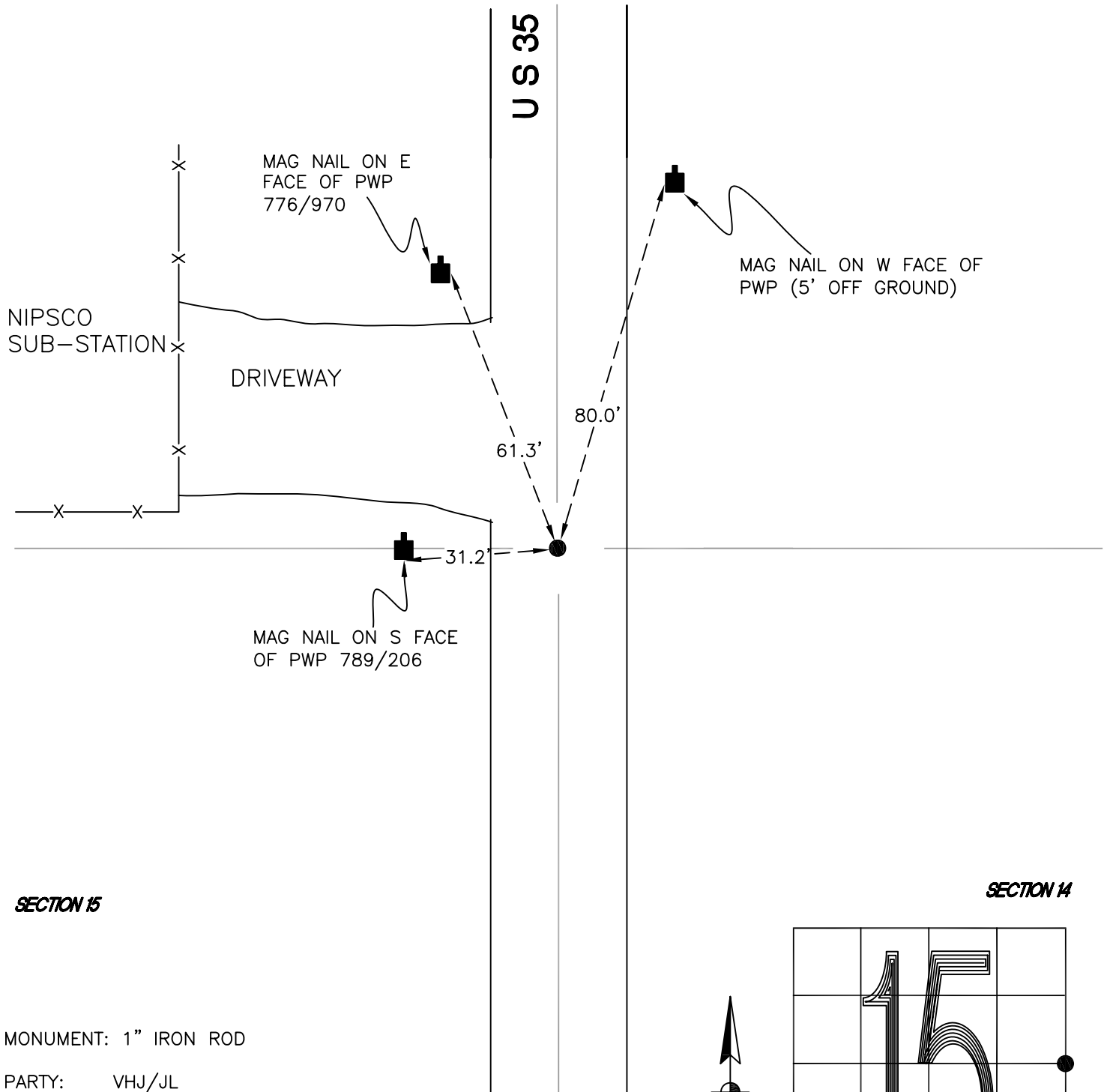
CALIFORNIA TOWNSHIP

T 32 N, R 2 W

L17

SECTION 15

SECTION 14



SECTION 15

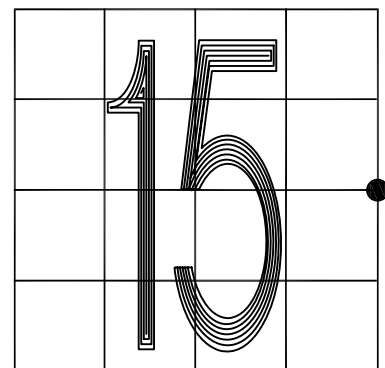
SECTION 14

MONUMENT: 1" IRON ROD

PARTY: VHJ/JL

DATE: 2/7/2013

COMMENTS: PLYMOUTH LAND SURVEYING ESTABLISHED THIS CORNER (BOOK LL. PAGE 28). INDOT RESET MONUMENT 0.1' W AND 0.1' S OF CORNER LOCATION IN 2006.



CORNER LOCATION IN THE SECTION

L17