

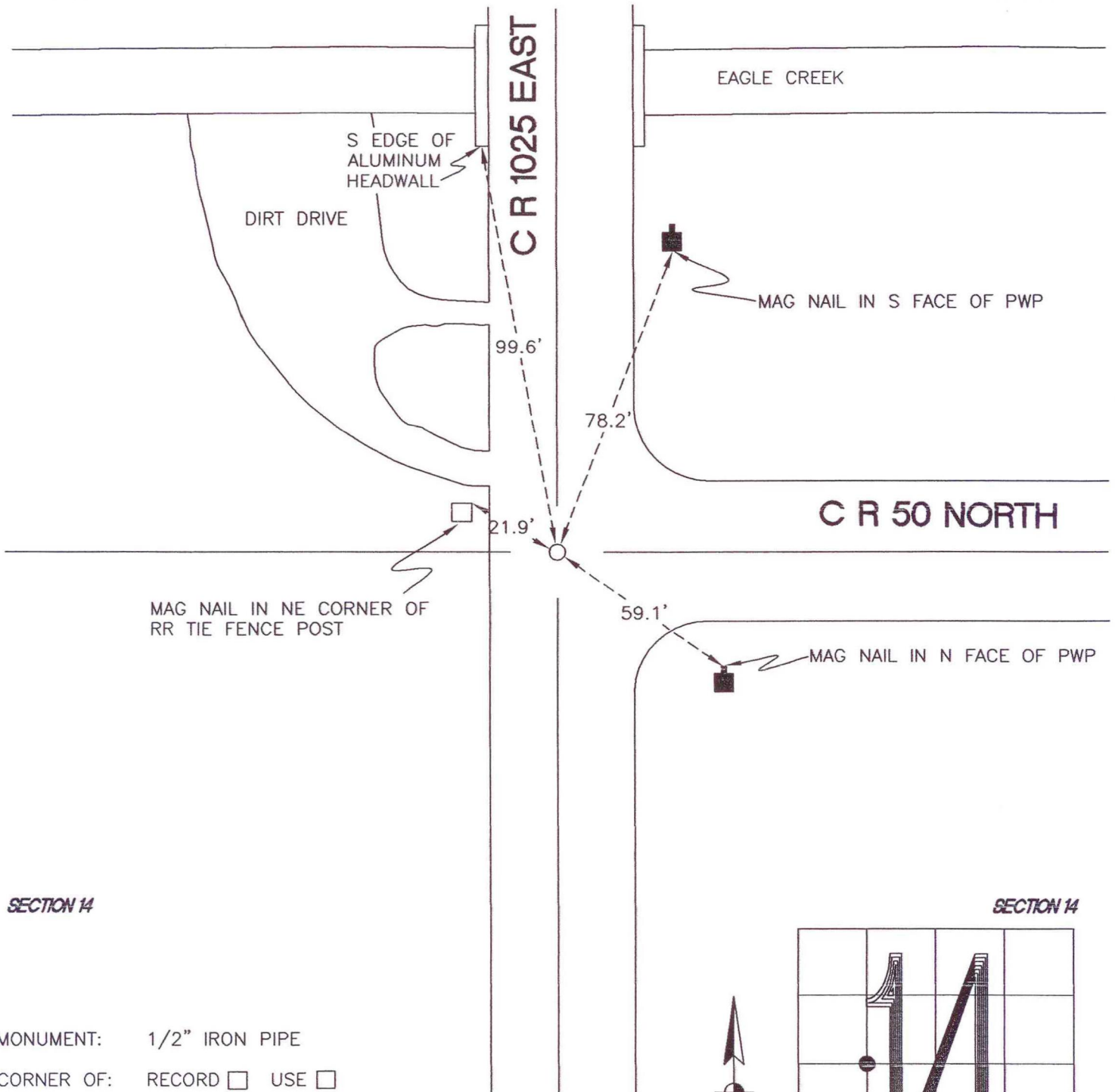
WASHINGTON TOWNSHIP

T 33 N, R 1 W

L 18

SECTION 14

SECTION 14

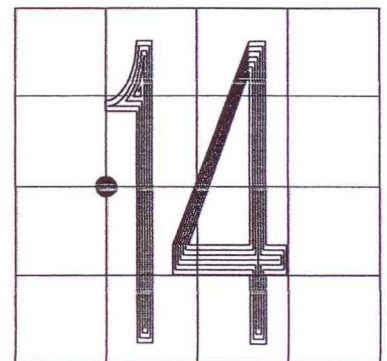


SECTION 14

SECTION 14

MONUMENT: 1/2" IRON PIPE
CORNER OF: RECORD USE
PARTY: JL/PM
DATE: 11-15-2007

COMMENTS: 1' W OF C OF 1025E.
SET BY JOSEPH SMRT IN A SURVEY
FOR O'NEILL, JOB # 795307.



CORNER LOCATION IN THE SECTION

L18