

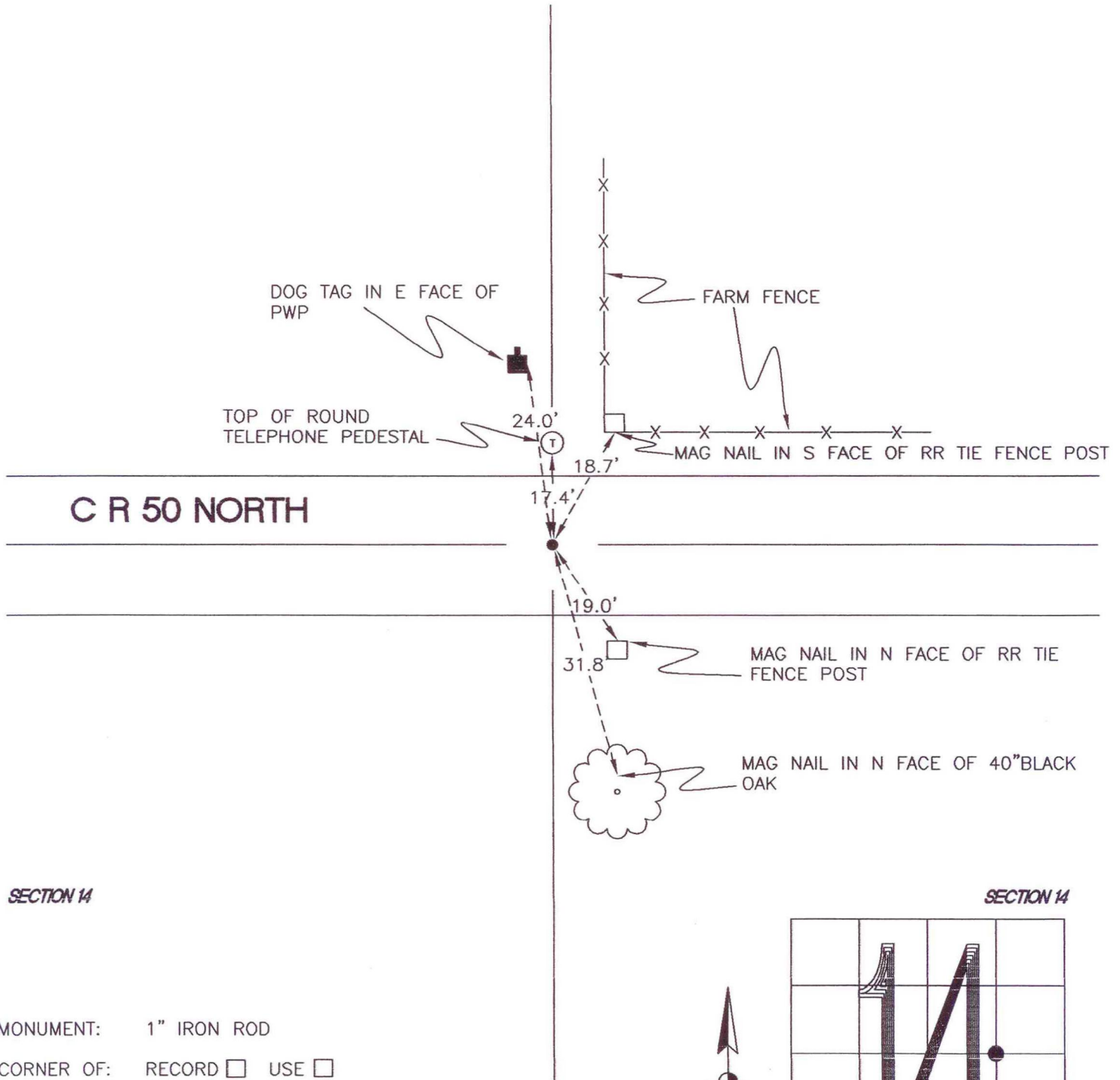
WASHINGTON TOWNSHIP

T 33 N, R 1 W

L20

SECTION 14

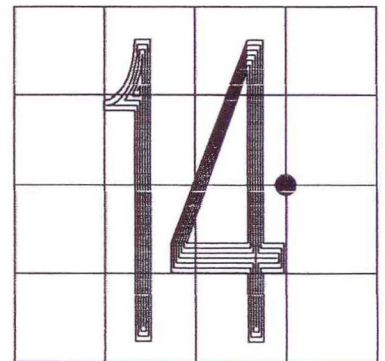
SECTION 14



SECTION 14

SECTION 14

MONUMENT: 1" IRON ROD
 CORNER OF: RECORD USE
 PARTY: JL/PM
 DATE: 11-6-2007
 COMMENTS: 5" BELOW GRADE



CORNER LOCATION IN THE SECTION

L20