

SECTION CORNER REFERENCE

SECTION 14 TOWNSHIP 34-N RANGE 2-W
(Description of Corner Location) EAST QUARTER CORNER

L21

L21

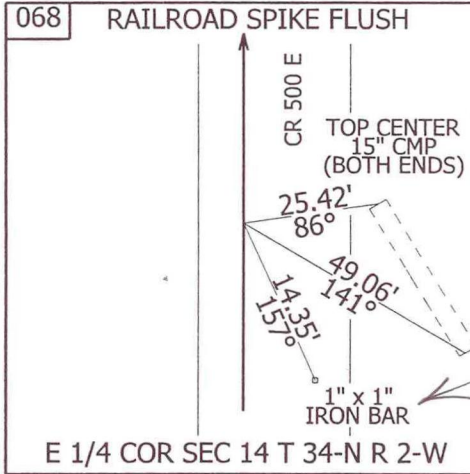
DAVIS TWP.,
STARKE COUNTY, INDIANA



COORDINATES
 NAD '83 IN E. ZONE
 NAD '83 IN W. ZONE
 LOCAL GRID
Units: US FEET
Pt.#: 068
N: 14,576.684
E: 15,294.092

TYPE OF MON.: RAILROAD SPIKE
DEPTH: FLUSH
UNCERTAINTY:
BY: LAPORTE SURVEY
DATE: JULY 2009
DES.NO.: 0500068

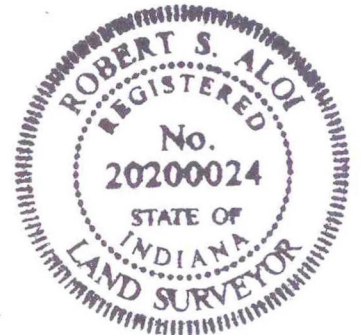
STATE FORM 40180 (R2/2-04)



REFERENCED BY: INDOT

* COMMENTS: THE 1" x 1" IRON BAR SHOWN IN THE SKETCH IS MOST PROBABLY THE ACTUAL SECTION CORNER MONUMENT OF RECORD BEING A CROSSING BOLT.
14.35' DIMENSION MATCHES A WITNESS OF A RAILROAD SPIKE.

Do Not Use RAILROAD SPIKE AS SECTION CORNER MONUMENT (see ATTACHED RECORD)



L21