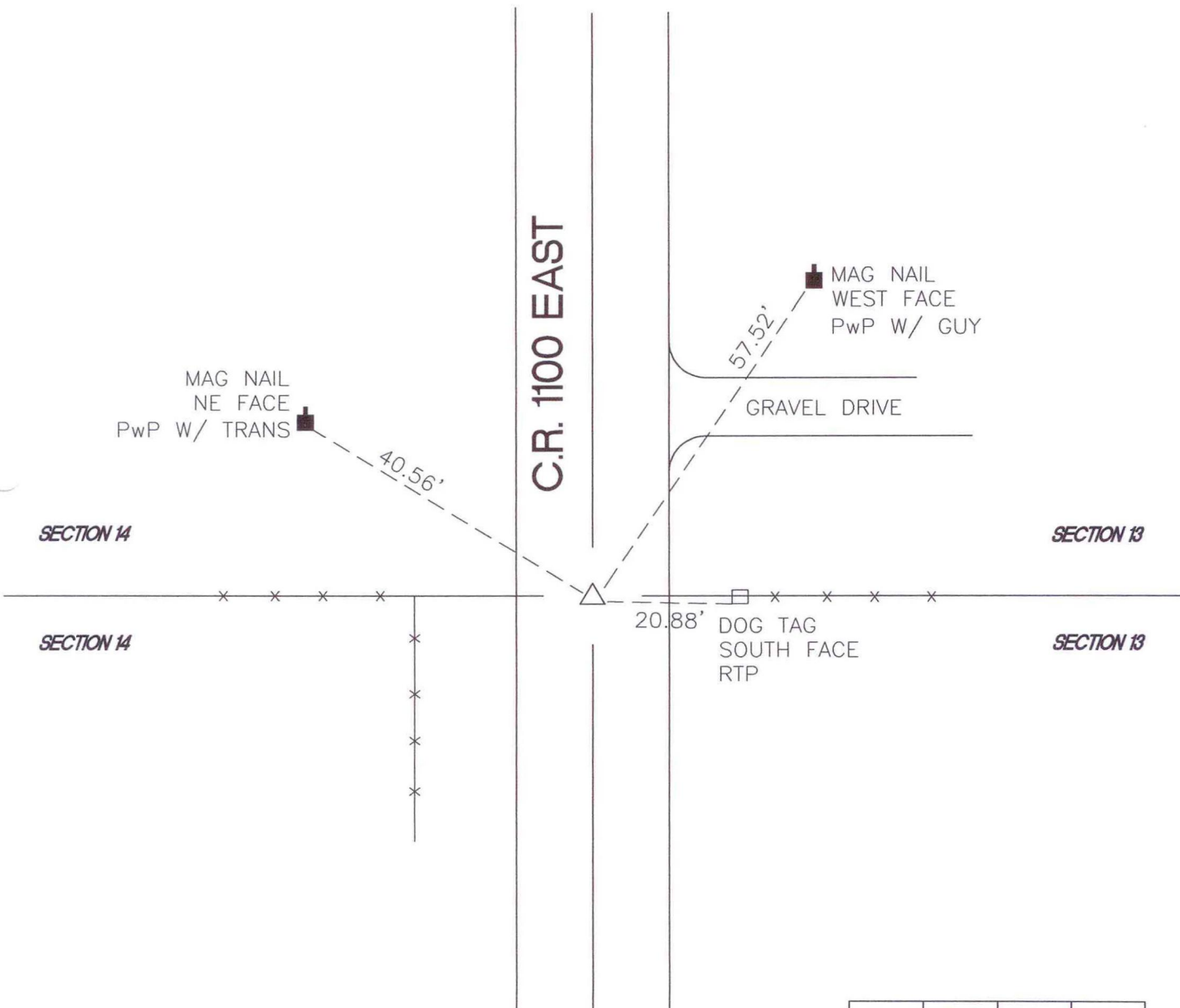


OREGON TOWNSHIP

T34 N, R 1 W



MONUMENT: (F) 2" CIP AT GRADE

CORNER OF: RECORD USE

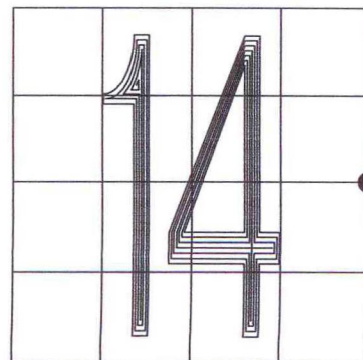
PARTY: VHJ/COD

DATE: 3-22-05

COMMENTS:
HISTORY:
RLP/AW FOUND RR SPIKE AND REPLACED
WITH 2" CIP ON JULY 13, 1984.

INDEX NUMBER

L21



CORNER LOCATION IN THE SECTION