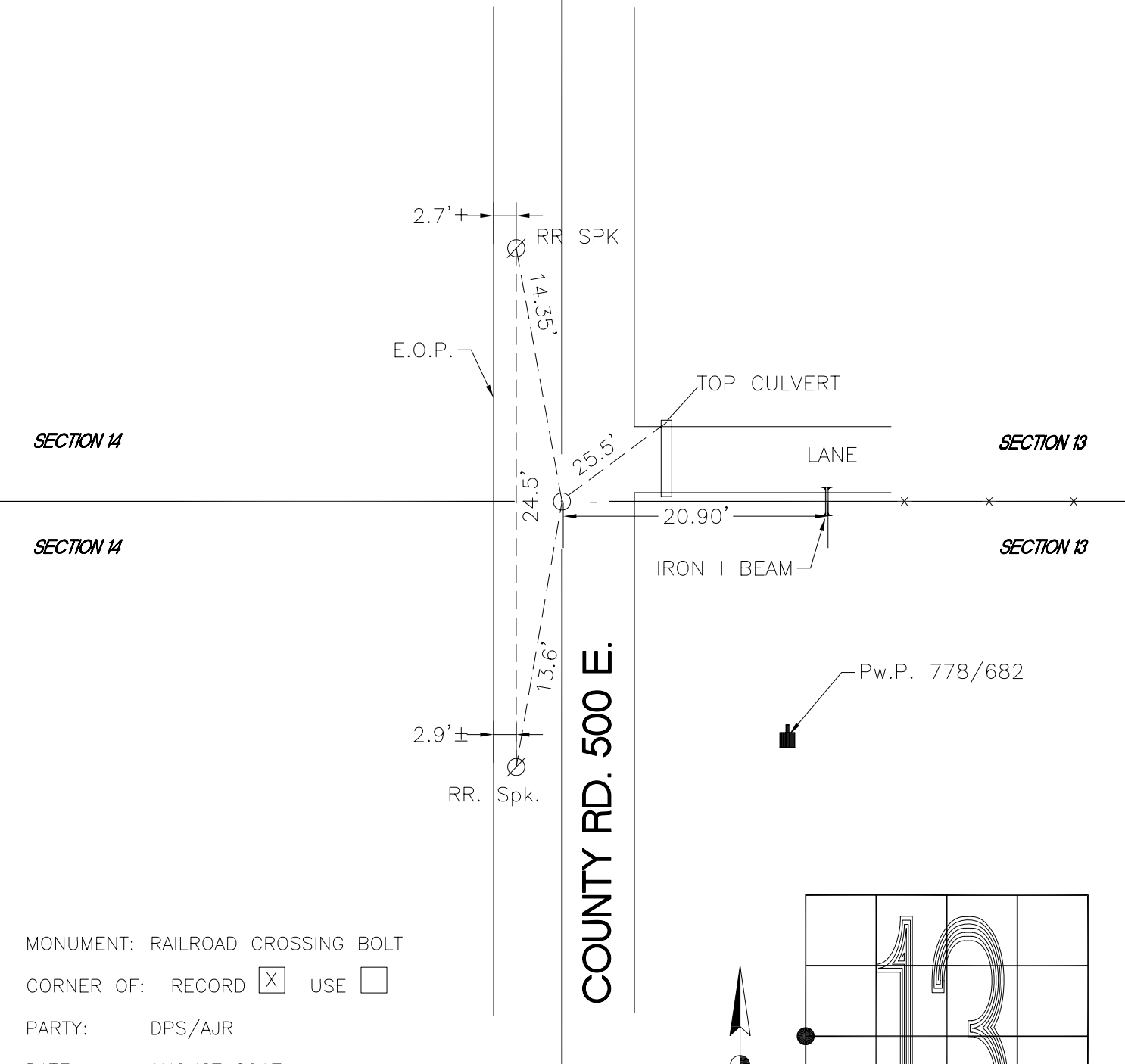


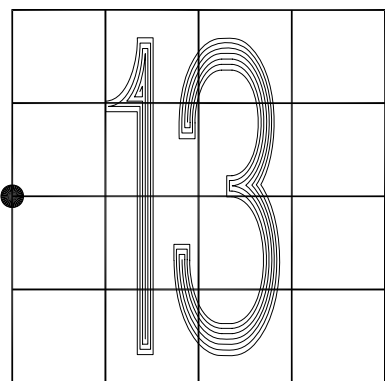
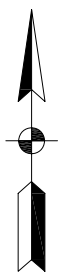
DAVIS TOWNSHIP

T 34 N, R 2 W

L21



MONUMENT: RAILROAD CROSSING BOLT
 CORNER OF: RECORD USE
 PARTY: DPS/AJR
 DATE: AUGUST 2017
 COMMENTS: 8' S. CL LANE. (FLUSH)



CORNER LOCATION IN THE SECTION