

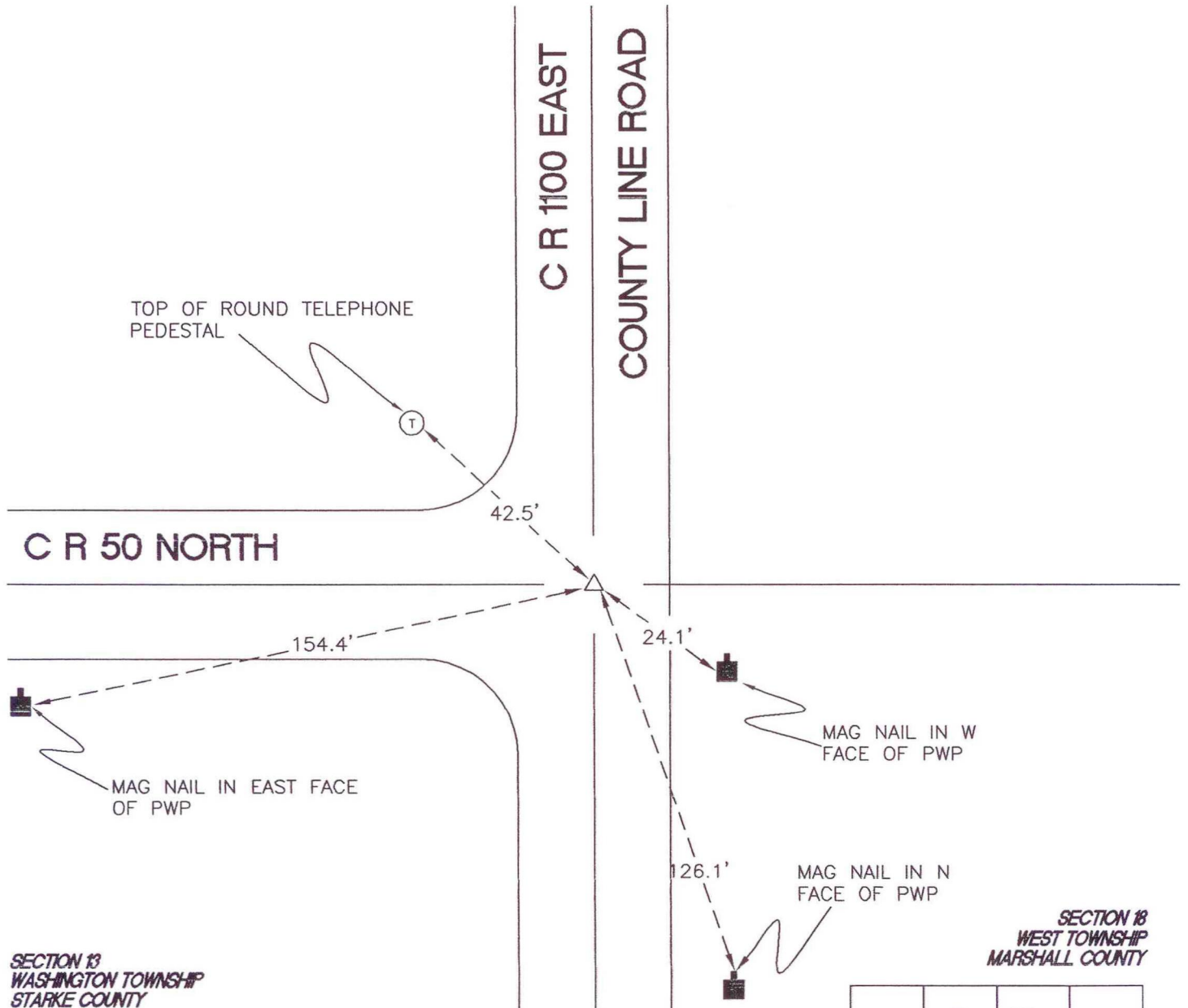
# WASHINGTON TOWNSHIP

T 33 N, R 1 W

## L25

STARKE COUNTY  
WASHINGTON TOWNSHIP  
SECTION 13

MARSHALL COUNTY  
WEST TOWNSHIP  
SECTION 18



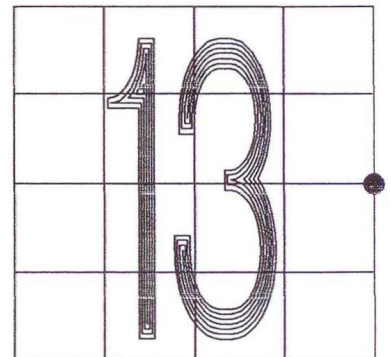
MONUMENT: ALUMINUM MONUMENT

CORNER OF: RECORD  USE

PARTY: JL/PM

DATE: 11/15/2007

COMMENTS: RR SPIKE FOUND IN 1983 WAS REPLACED BY A BRASS MARKER AND THEN AN ALUMINUM MONUMENT IN 1994 BY MARSHALL COUNTY.



CORNER LOCATION IN THE SECTION

# L25