

# WASHINGTON TOWNSHIP

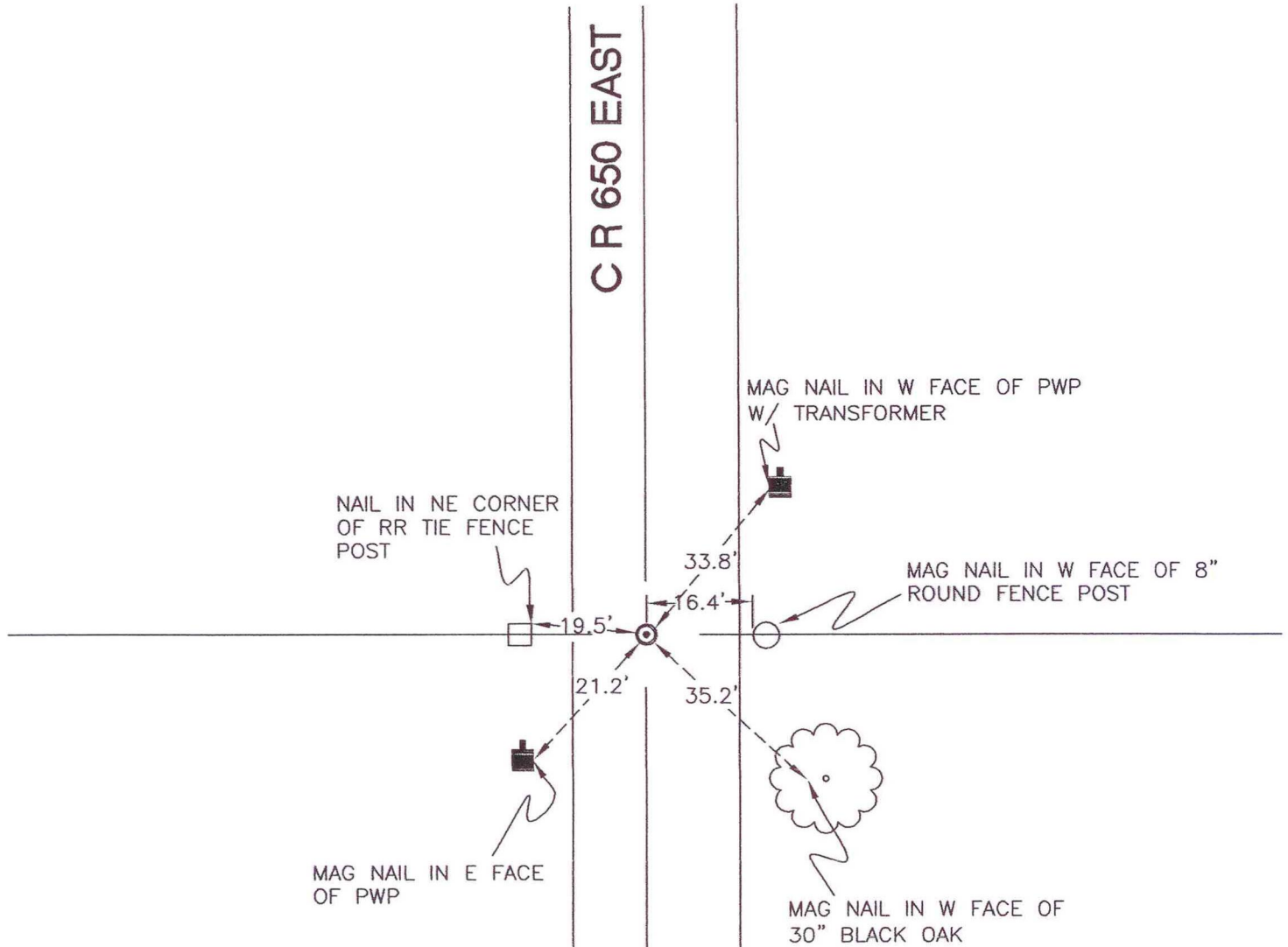
T 33 N, R 1 W

## L3

SECTION 18

SECTION 18

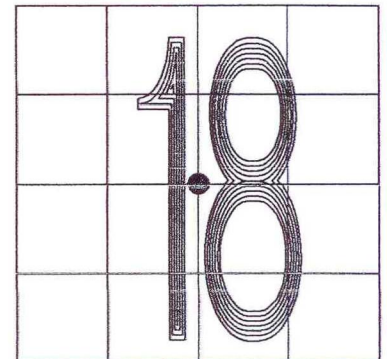
CR 650 EAST



SECTION 18

SECTION 18

MONUMENT: 1 1/2" IRON PIPE W/RAIL BOLT INSIDE  
CORNER OF: RECORD  USE   
PARTY: DPS/JL  
DATE: 2-7-2008  
COMMENTS: 10" BELOW GRADE, 2.5' W OF  $\text{CL}$  OF 650E



CORNER LOCATION IN THE SECTION

## L3