

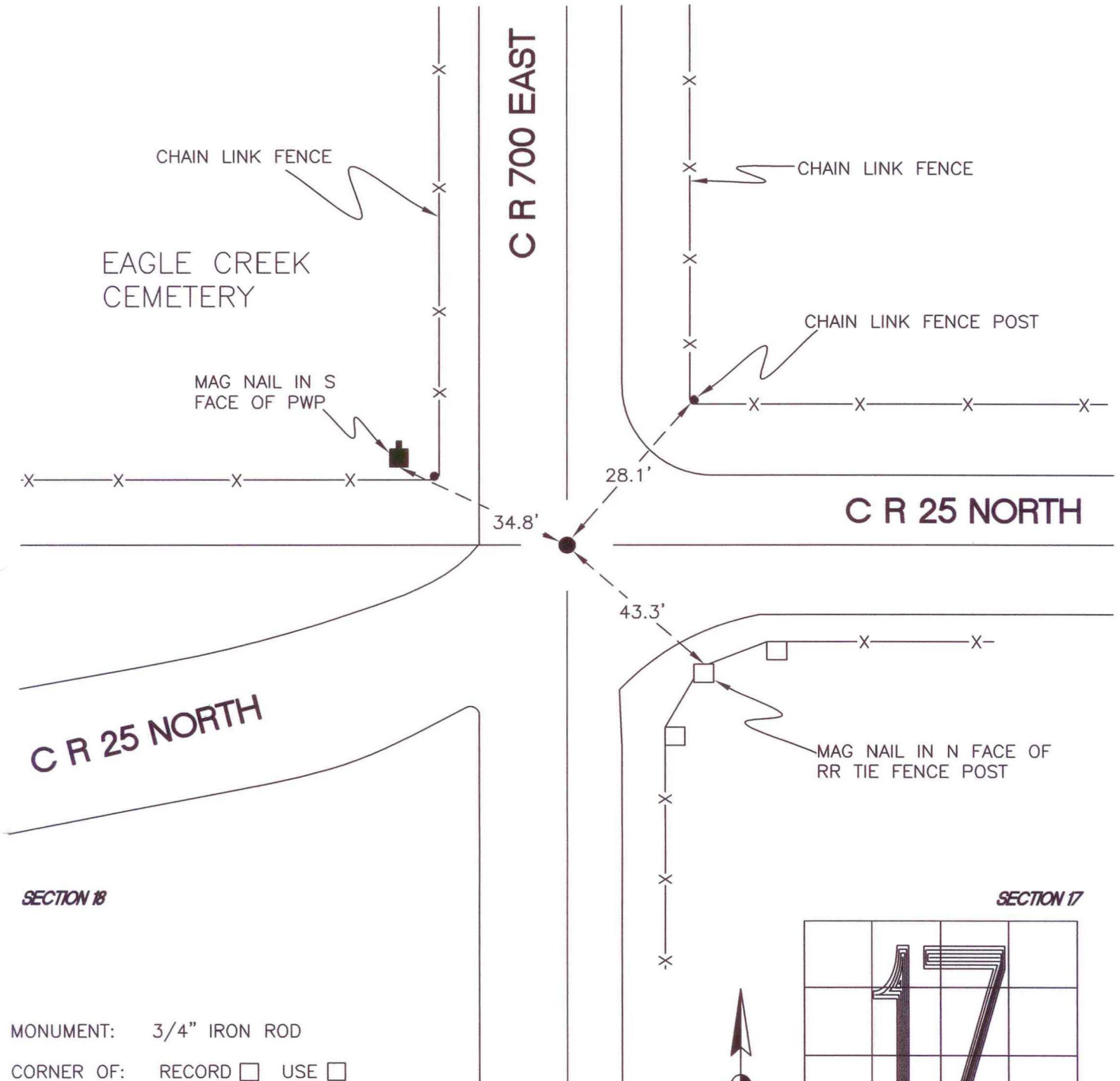
WASHINGTON TOWNSHIP

T 33 N, R 1 W

M5

SECTION 18

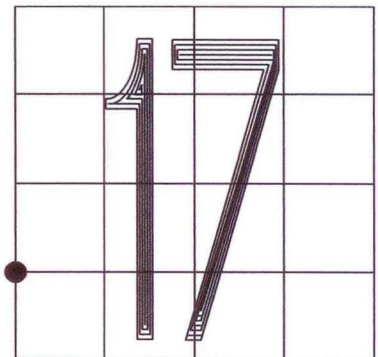
SECTION 17



SECTION 18

SECTION 17

MONUMENT: 3/4" IRON ROD
 CORNER OF: RECORD USE
 PARTY: JL/PM
 DATE: 6-18-2008
 COMMENTS: 1' E OF ϕ OF 700E; 0.2" BELOW GRADE



CORNER LOCATION IN THE SECTION

M5