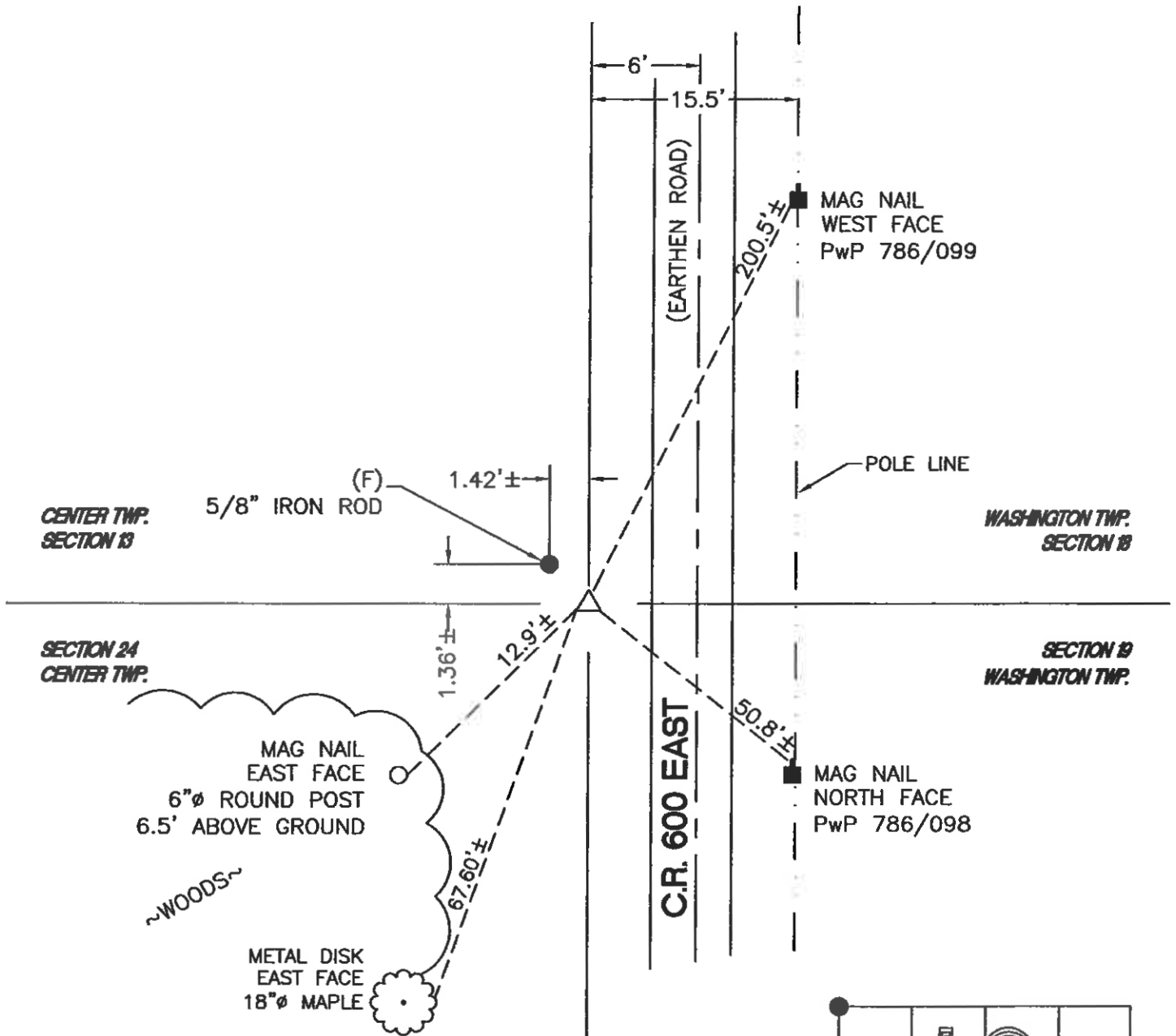


WASHINGTON TOWNSHIP

T 33 N, R 1 W



CENTER TWP.
SECTION 13

WASHINGTON TWP.
SECTION 13

SECTION 24
CENTER TWP.

SECTION 19
WASHINGTON TWP.

MAG NAIL
EAST FACE
6"Ø ROUND POST
6.5' ABOVE GROUND

~WOODS~

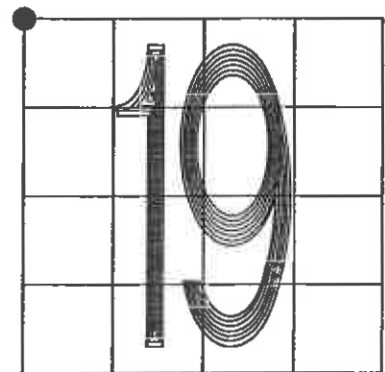
METAL DISK
EAST FACE
18"Ø MAPLE

MAG NAIL
WEST FACE
PwP 786/099

MAG NAIL
NORTH FACE
PwP 786/098

MONUMENT: (F) 3/4" PINCH PIPE
 CORNER OF: RECORD USE
 PARTY: DPS/JL
 DATE: 8-15-06
 COMMENTS:

INDEX NUMBER
N1



CORNER LOCATION IN THE SECTION