

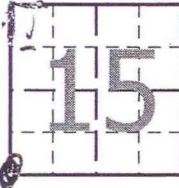
SECTION CORNER REFERENCE

N13

N13

SECTION 22 TOWNSHIP 34-N RANGE 2-W
(Description of Corner Location) NORTHWEST CORNER

DAVIS TWP.,
STARKE COUNTY, INDIANA

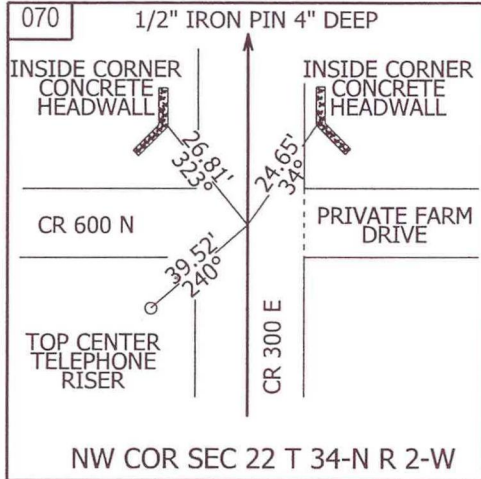


COORDINATES

NAD '83 IN E. ZONE
 NAD '83 IN W. ZONE
 LOCAL GRID
Units: US FEET
Pt.#: 070
N: 11,865.761
E: 4,728.764

TYPE OF MON.: 1/2" IRON PIN
DEPTH: 4"
UNCERTAINTY: _____
BY: COUNTY SURVEYOR
DATE: JULY 2009
DES.NO.: 0500068

STATE FORM 40180 (R2/2-04)



REFERENCED BY: INDOT

COMMENTS: MONUMENT AND REFERENCES
SAME AS IN 1985



N13