

NORTH BEND TOWNSHIP

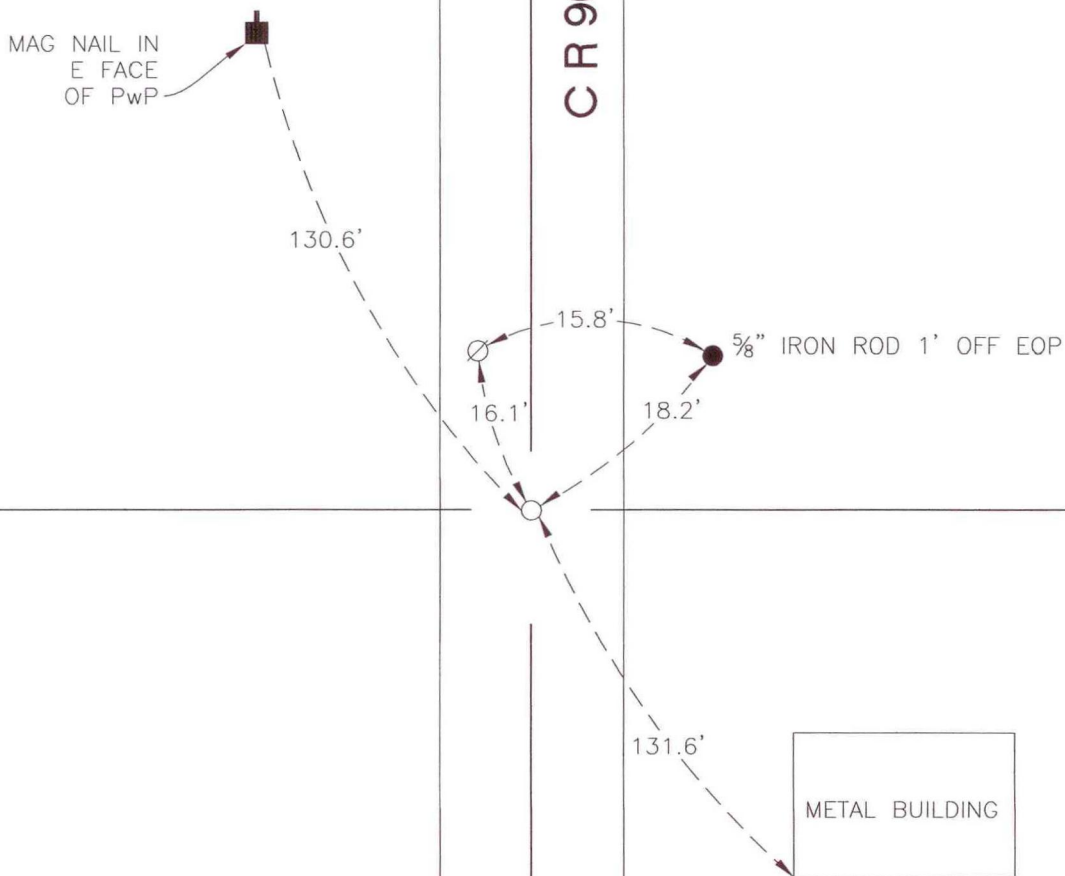
T 32 N, R 1 W

N13

SECTION 16

SECTION 15

CR 900 EAST



SECTION 21

SECTION 22

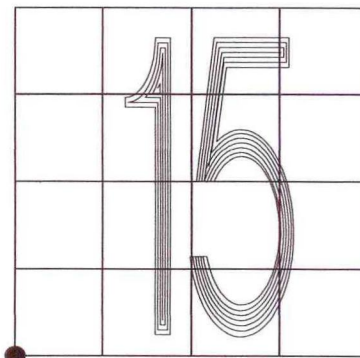
MONUMENT: 1½" IRON PIPE (TOP DAMAGED)

CORNER OF: RECORD USE

PARTY: DWC/JL

DATE: 11-25-2008

COMMENTS:



CORNER LOCATION IN THE SECTION

N13