

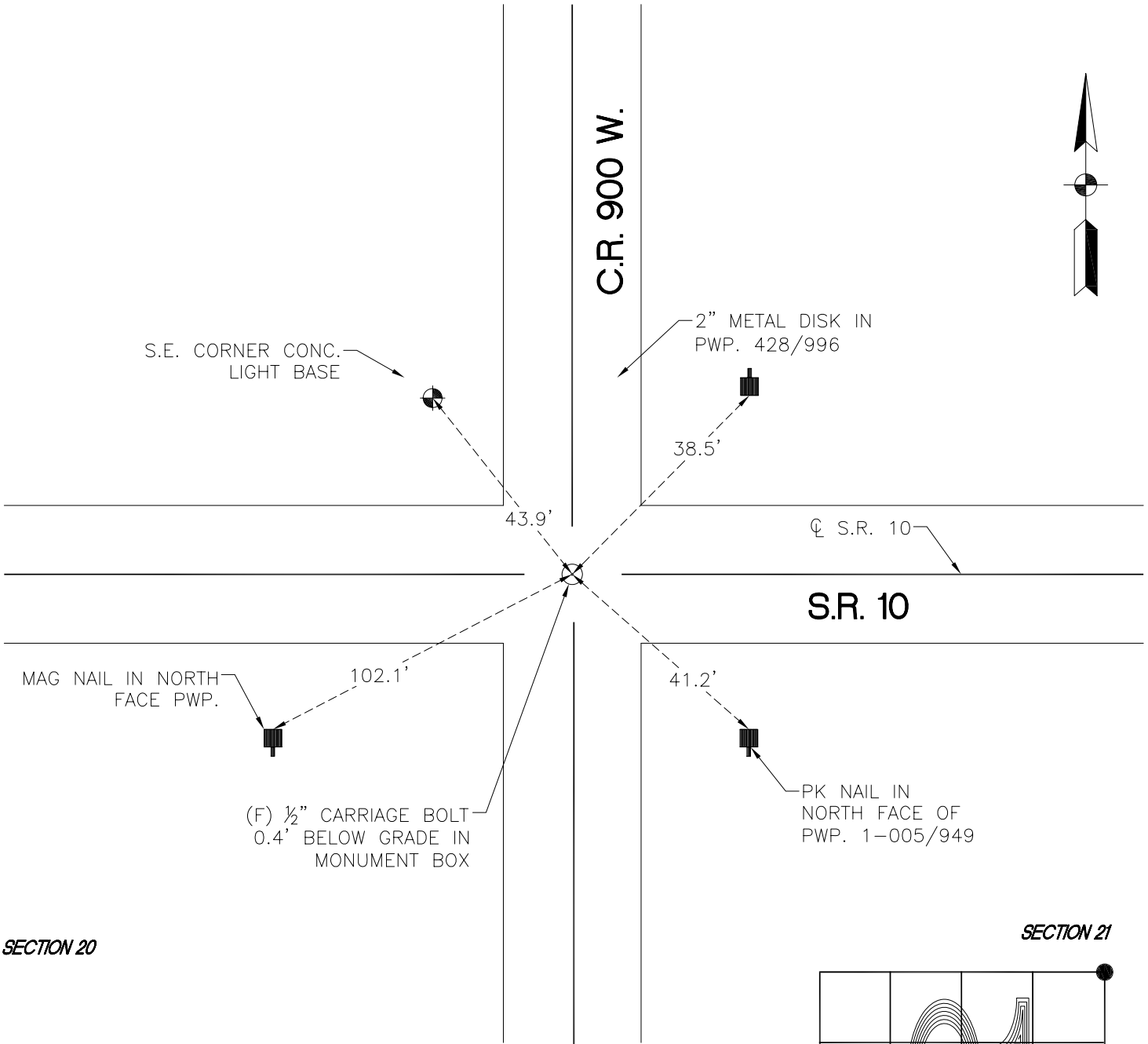
RAILROAD TOWNSHIP

T 32 N, R 4 W

N13

SECTION 17

SECTION 16



SECTION 20

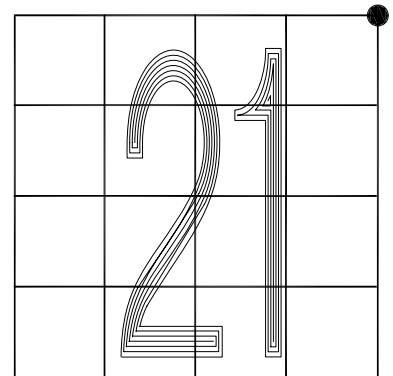
SECTION 21

MONUMENT: 1/2" CARRIAGE BOLT IN MONUMENT BOX

PARTY: DPS/REZ

DATE: 2015

COMMENTS: FOUND BY: DWC/DS 5-13-1992



CORNER LOCATION IN THE SECTION

N13