

SECTION CORNER REFERENCE

SECTION 22 TOWNSHIP 34-N RANGE 2-W
(Description of Corner Location) NORTH QUARTER CORNER

N15

N15

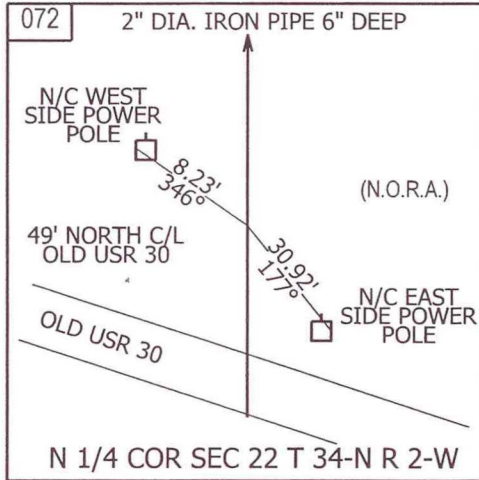
DAVIS TWP.,
STARKE COUNTY, INDIANA



COORDINATES
 NAD '83 IN E. ZONE
 NAD '83 IN W. ZONE
 LOCAL GRID
Units: US FEET
Pt.#: 072
N: 11,894.716
E: 7,364.902

TYPE OF MON.: 2" DIA. IRON PIPE
DEPTH: 6"
UNCERTAINTY:
BY: LAPORTE SURVEY
DATE: JULY 2009
DES.NO.: 0500068

STATE FORM 40180 (R2/2-04)



REFERENCED BY: INDOT

COMMENTS: MONUMENT NOT PREVIOUSLY RECORDED IN SURVEYOR'S OFFICE

NEEDS TO BE VERIFIED BY SURVEY



N15