

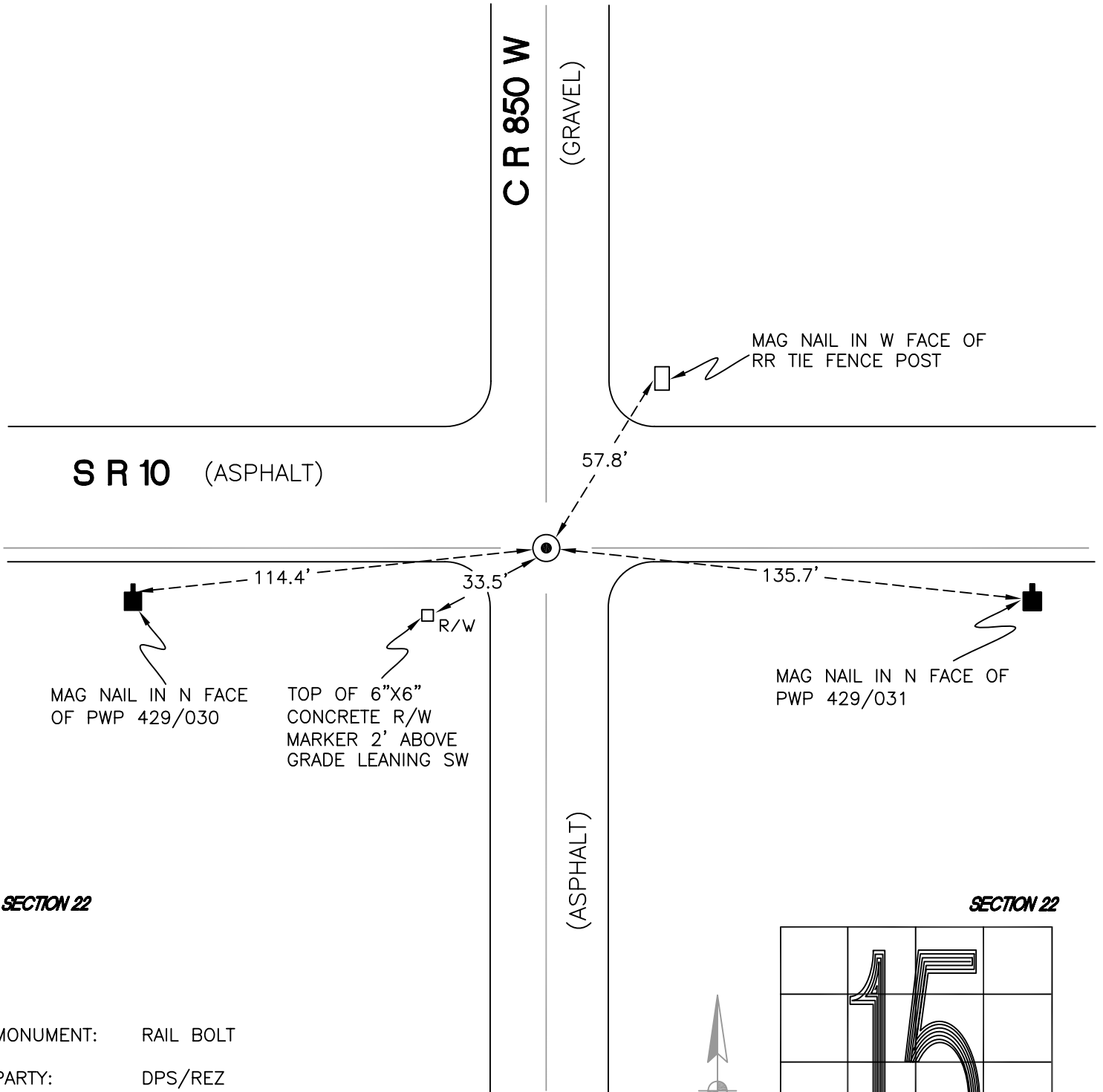
# RAILROAD TOWNSHIP

T 32 N, R 4 W

## N15

SECTION 15

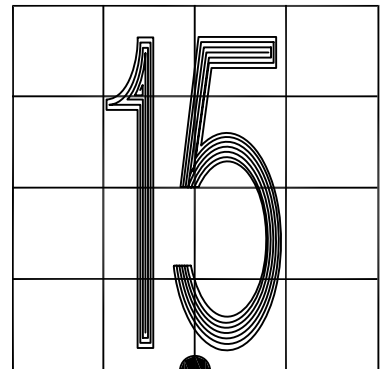
SECTION 15



SECTION 22

SECTION 22

MONUMENT: RAIL BOLT  
PARTY: DPS/REZ  
DATE: 2015  
COMMENTS: SET BY TERRITORIAL ENGINEERING ON 11-16-07  
IN JOB #07236.  
1' N OF THE S EDGE OF PAVEMENT OF SR 10.



CORNER LOCATION IN THE SECTION

## N15