

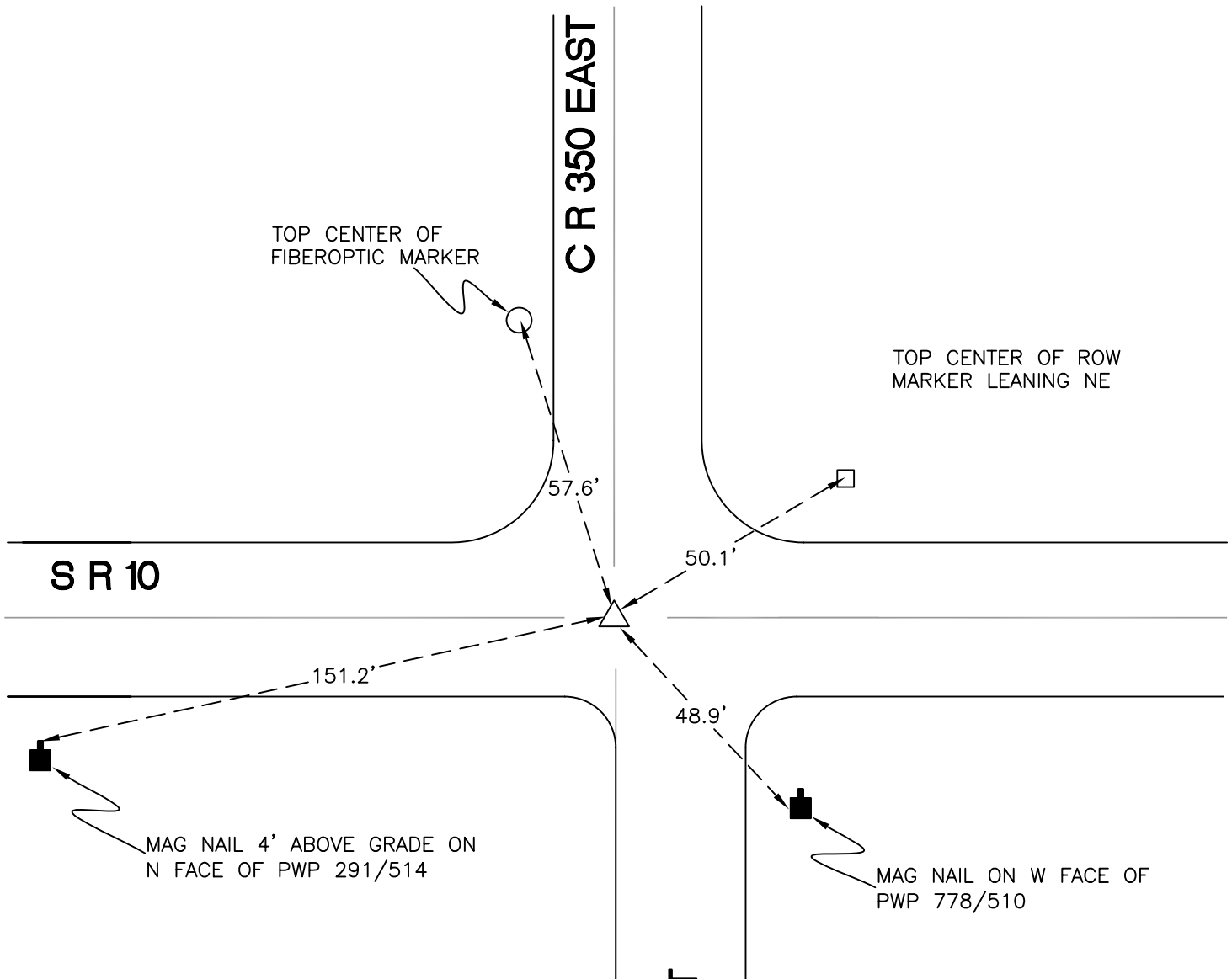
CALIFORNIA TOWNSHIP

T 32 N, R 2 W

N15

SECTION 15

SECTION 15



SECTION 22

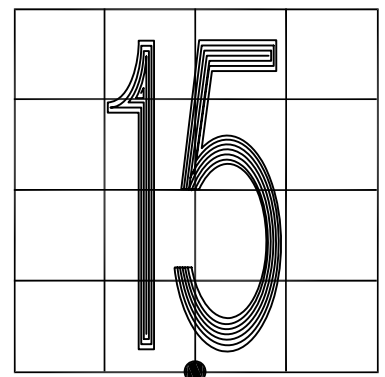
SECTION 22

MONUMENT: HARRISON MONUMENT

PARTY: VHJ/JL

DATE: 2/7/13

COMMENTS: MONUMENT IS 4.5' W OF \oslash OF CR 350 E, GOING N.
SET BY INDOT AFTER REPAVING. REPLACES CROSSING BOLT SET IN 1991 BY DWC/AW.



CORNER LOCATION IN THE SECTION

N15