

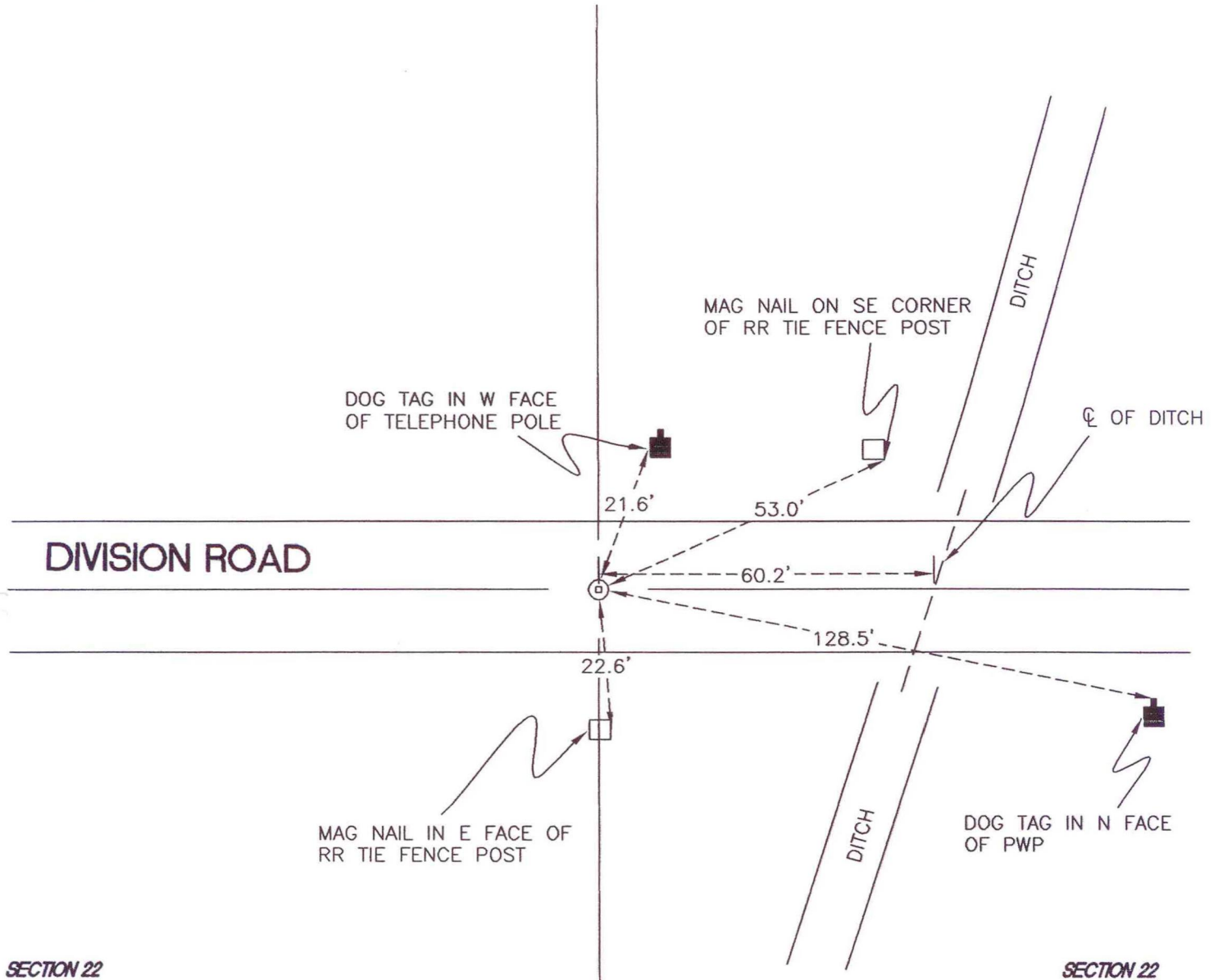
WASHINGTON TOWNSHIP

T 33 N, R 1 W

N15

SECTION 15

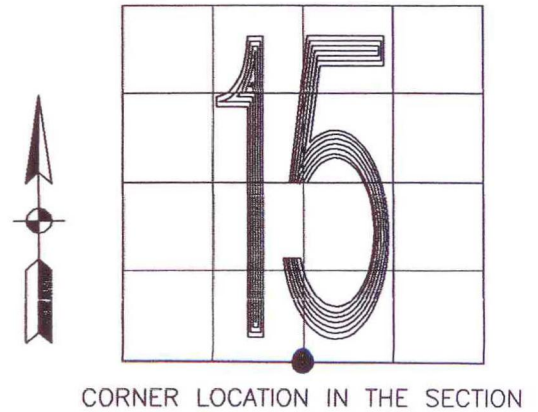
SECTION 15



SECTION 22

SECTION 22

MONUMENT: RR CROSSING BOLT
CORNER OF: RECORD USE
PARTY: JL/PM
DATE: 11-6-2007
COMMENTS: REPLACED RR SPIKE WITH CROSSING BOLT.
0.1' BELOW GRADE.



CORNER LOCATION IN THE SECTION

N15