

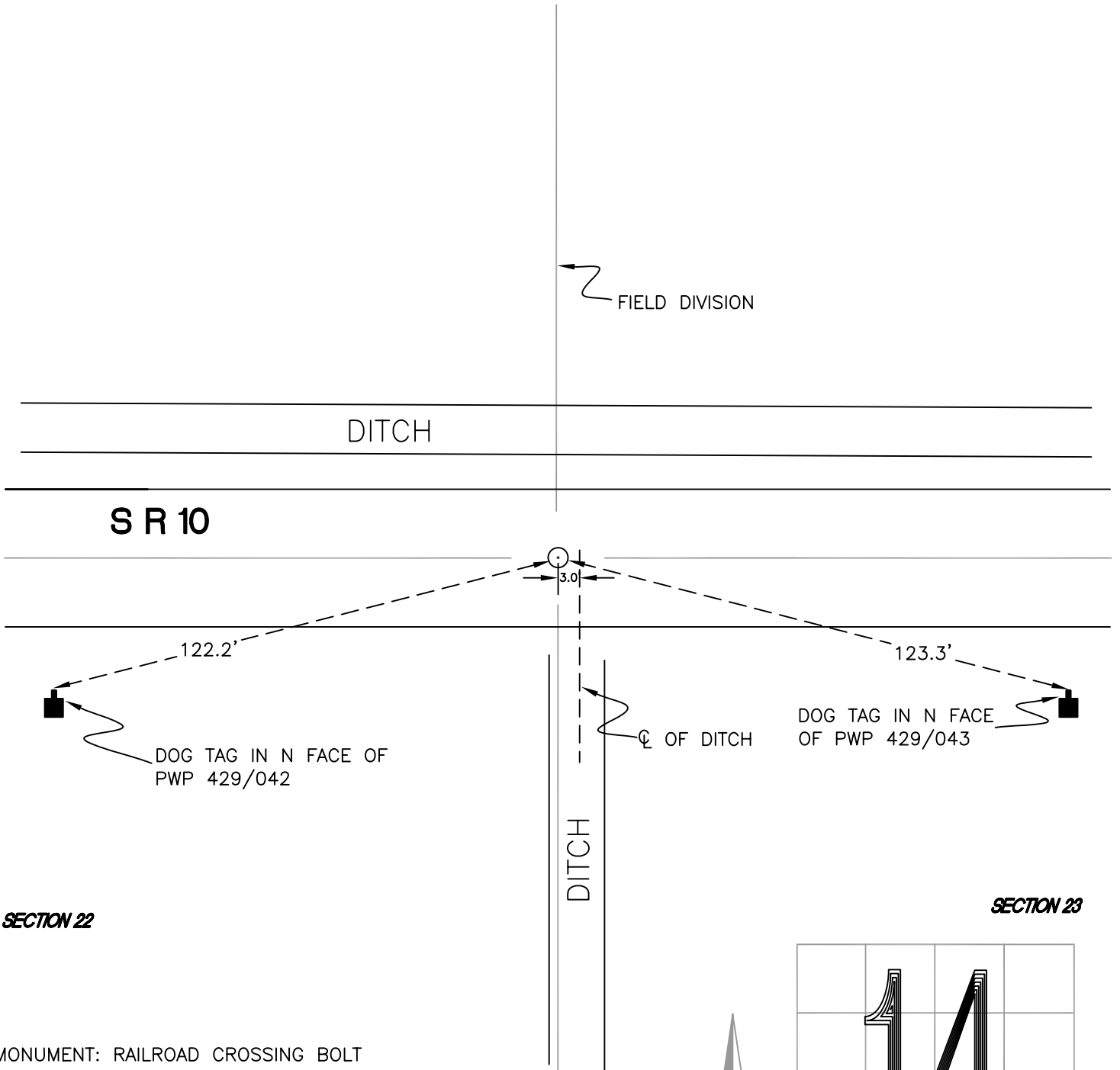
RAILROAD TOWNSHIP

T 32 N, R 4 W

N17

SECTION 15

SECTION 14

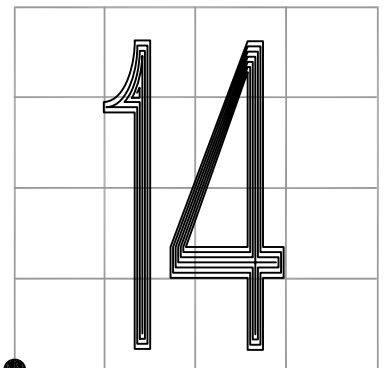


MONUMENT: RAILROAD CROSSING BOLT

PARTY: DPS/REZ

DATE: 2015

COMMENTS: SET CROSSING BOLT REPLACES FOUND MAG NAIL. RR SPIKE FOUND BY AW/DWC IN 1991; DISTANCES FROM MONUMENT TO REFERENCES CHECK OUT.



CORNER LOCATION IN THE SECTION

N17