

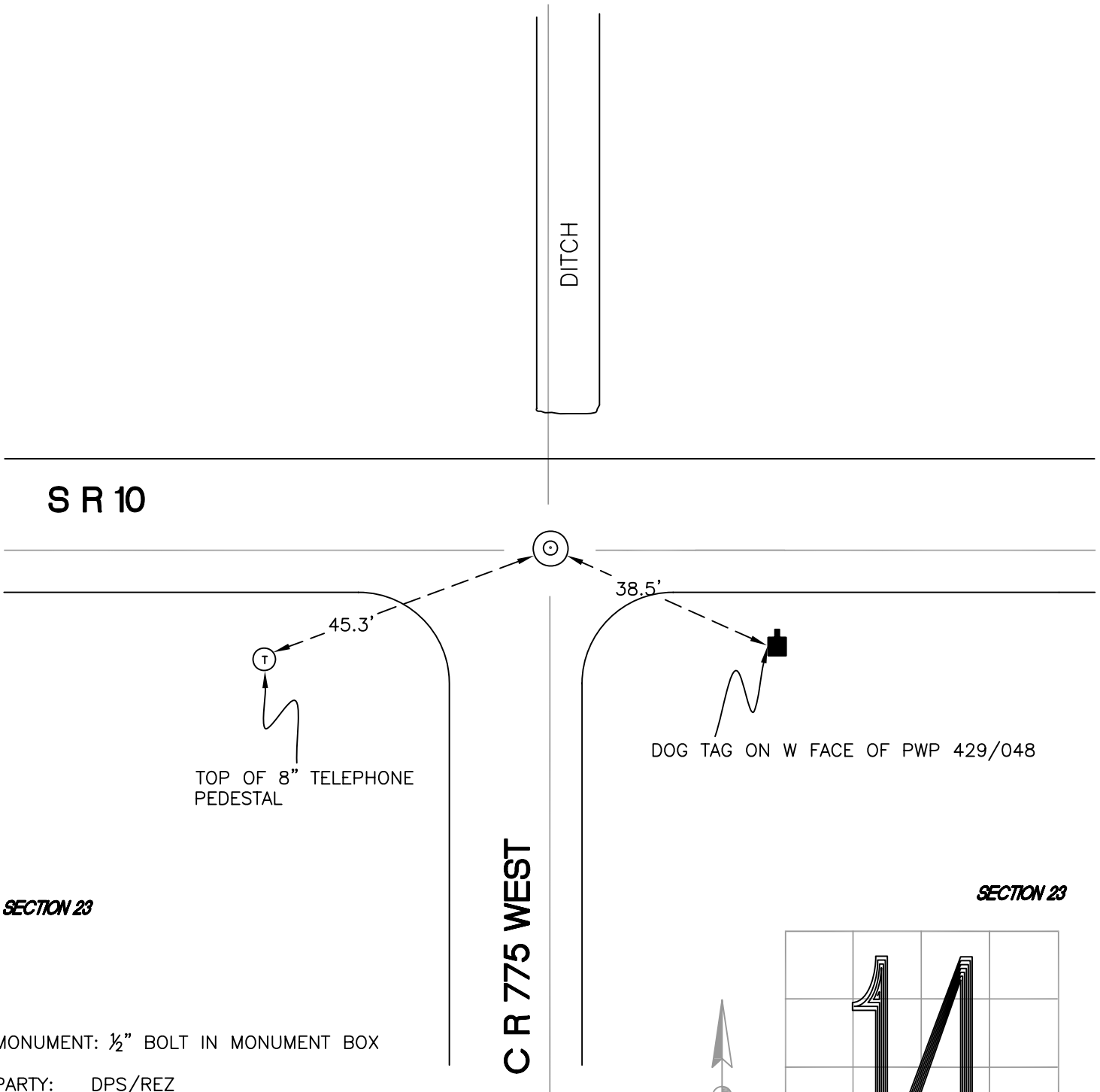
RAILROAD TOWNSHIP

T 32 N, R 4 W

N18

SECTION 14

SECTION 14

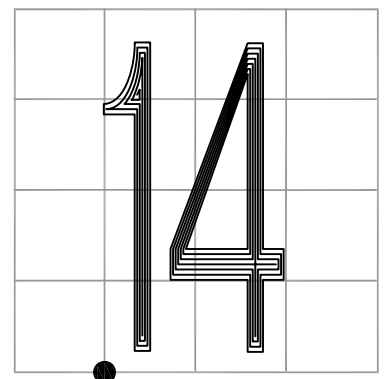


MONUMENT: 1/2" BOLT IN MONUMENT BOX

PARTY: DPS/REZ

DATE: 2015

COMMENTS: 4' S OF \odot OF SR 10. 7' W OF \odot
OF DITCH TO THE N. 8' E OF \odot
775 W. FOUND BY AW/DWC IN 1991.



CORNER LOCATION IN THE SECTION

N18