

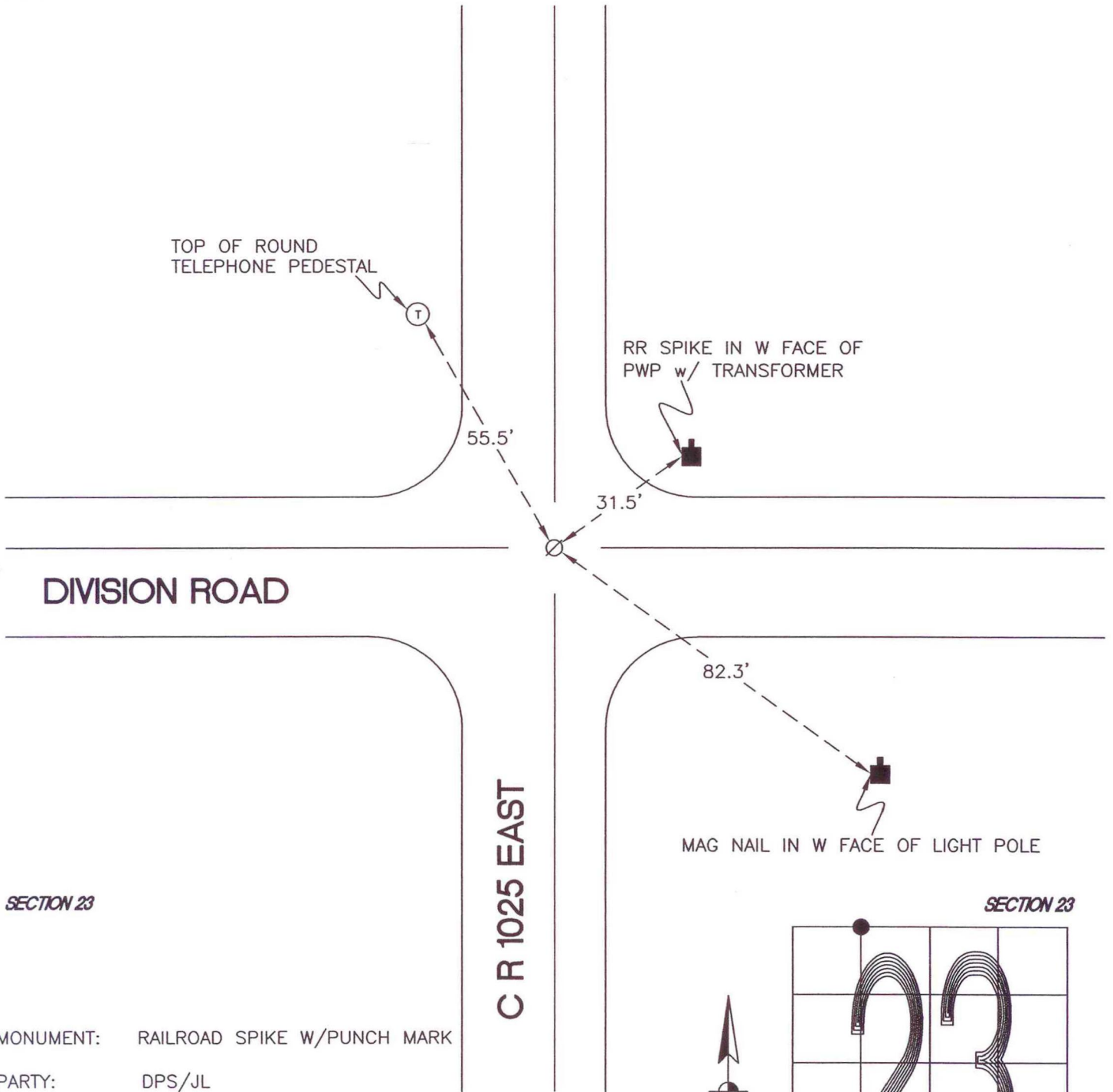
WASHINGTON TOWNSHIP

T 33 N, R 1 W

N18

SECTION 14

SECTION 14



SECTION 23

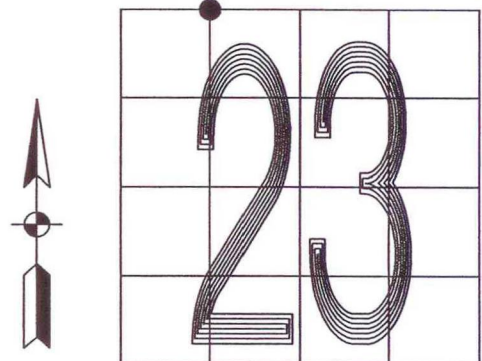
SECTION 23

MONUMENT: RAILROAD SPIKE W/PUNCH MARK

PARTY: DPS/JL

DATE: 11-3-2009

COMMENTS: MONUMENT IS 3' E OF ϕ OF 1025E AND 3.5' N OF ϕ OF DIVISION ROAD. ESTABLISHED BY WIGHTMAN CRAMER IN 1996 AS RECORDED IN BOOK KK, PAGE 781.



CORNER LOCATION IN THE SECTION

N18