

SECTION CORNER REFERENCE

SECTION 23 TOWNSHIP 34-N RANGE 2-W
 (Description of Corner Location) NORTH QUARTER CORNER
DAVIS TWP.,
STARKE COUNTY, INDIANA

N19

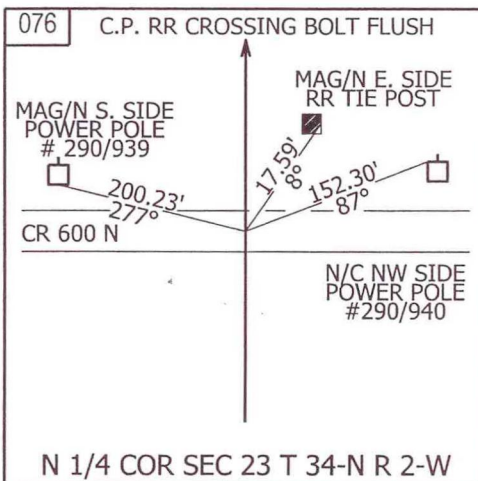
N19



COORDINATES
 NAD '83 IN E. ZONE
 NAD '83 IN W. ZONE
 LOCAL GRID
 Units: US FEET
 Pt.#: 076
 N: 11,903.378
 E: 12,666.860

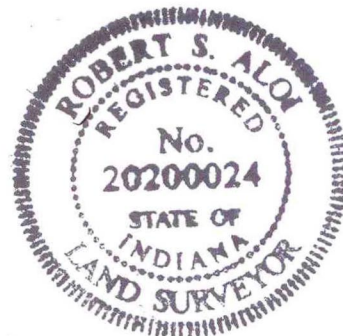
TYPE OF MON.: C.P. RR CROSSING BOLT
 DEPTH: FLUSH
 UNCERTAINTY:
 BY: LAPORTE SURVEY
 DATE: JULY 2009
 DES.NO.: 0500068

STATE FORM 40180 (R2/2-04)



REFERENCED BY: INDOT

COMMENTS: MONUMENT AND REFERENCES
SAME AS IN 2006



N19