

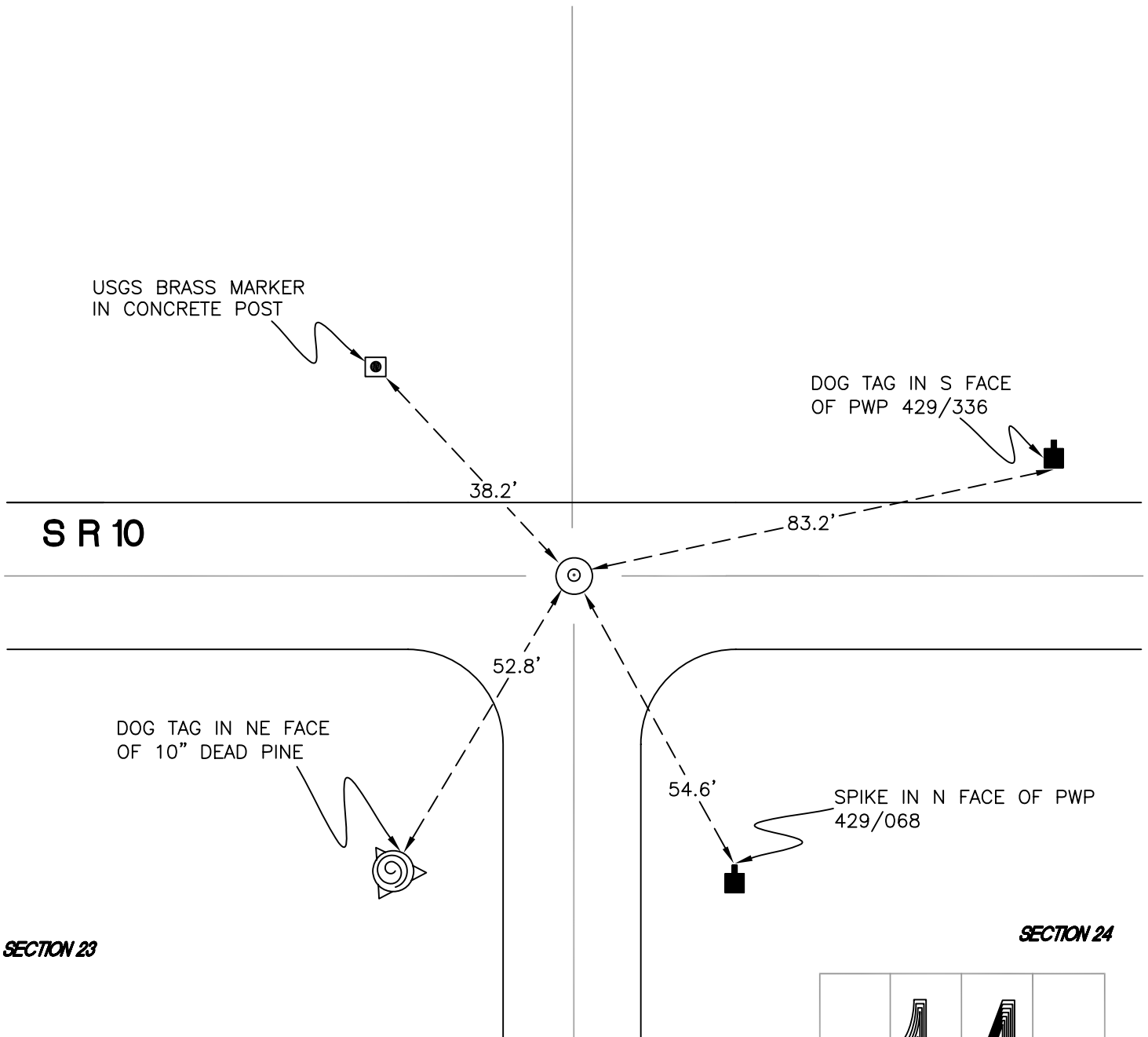
# RAILROAD TOWNSHIP

T 32 N, R 4 W

## N21

SECTION 14

SECTION 13



SECTION 23

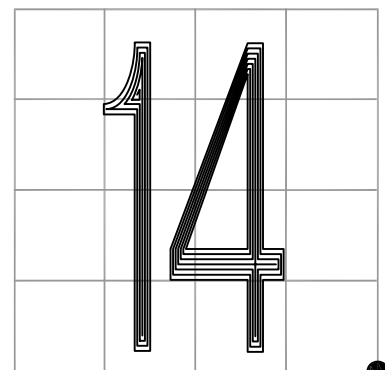
SECTION 24

MONUMENT: 1/2" CARRIAGE BOLT IN MONUMENT BOX

PARTY: DPS/REZ

DATE: 2015

COMMENTS: MONUMENT IS 0.4' BELOW GRADE.  
RAILROAD BOLT FOUND BY VHJ IB 1987.



CORNER LOCATION IN THE SECTION

## N21