

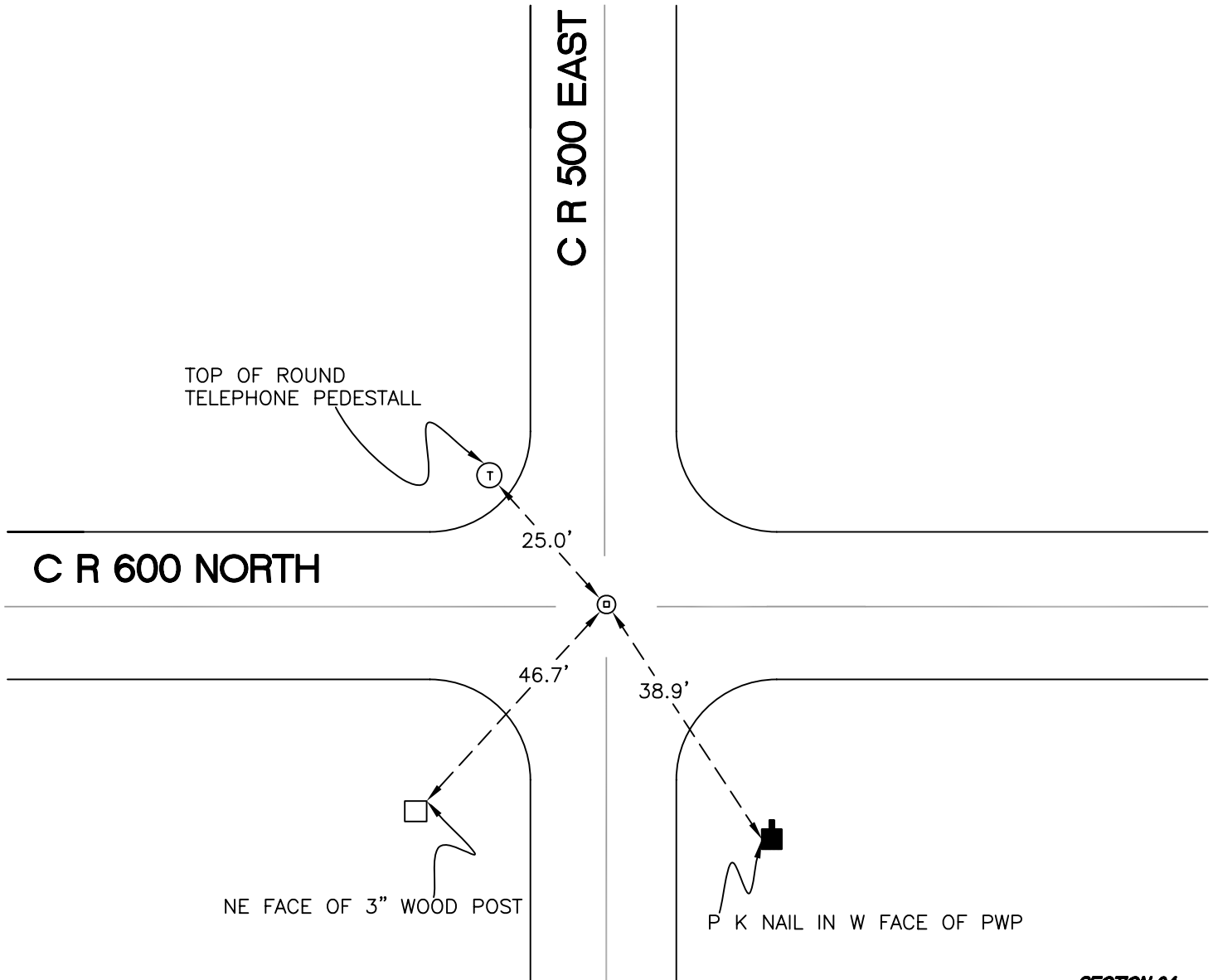
DAVIS TOWNSHIP

T 34 N, R 2 W

N21

SECTION 14

SECTION 13



SECTION 23

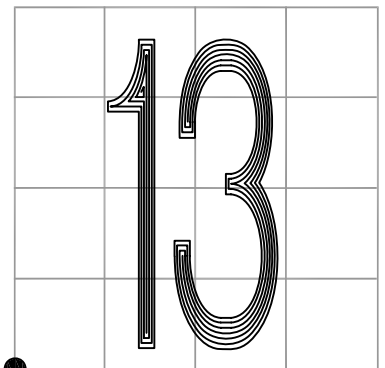
SECTION 24

MONUMENT: RAILROAD CROSSING BOLT

PARTY: DPS/JL

DATE: 3/14/16

COMMENTS: FOUND BY INDOT IN 2009 AND DPS/MAA IN 2001.



CORNER LOCATION IN THE SECTION

N21