

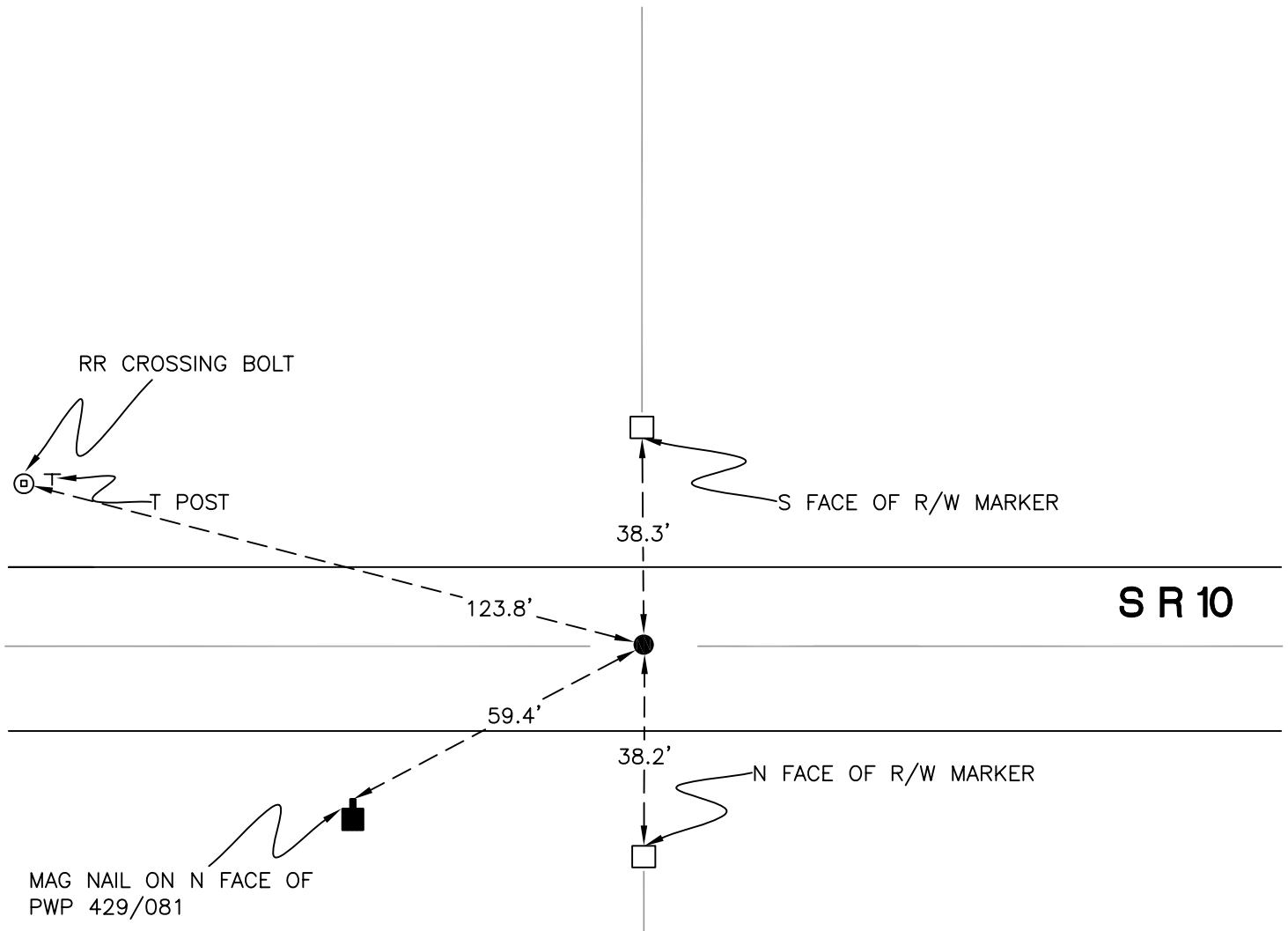
# RAILROAD TOWNSHIP

T 32 N, R 4 W

## N23

SECTION 13

SECTION 13



SECTION 24

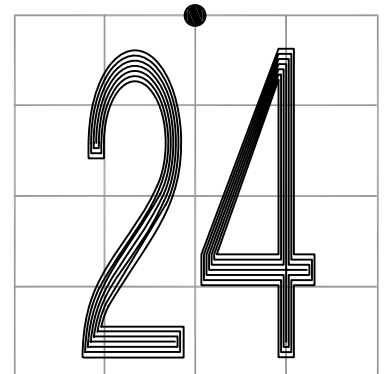
SECTION 24

MONUMENT: BOAT SPIKE

PARTY: DPS/JL

DATE: 3-19-2015

COMMENTS: MONUMENT IS 6" BELOW GRADE. USED BY TERRITORIAL ENGINEERING, DOCUMENT # 2014000174.



CORNER LOCATION IN THE SECTION

# N23