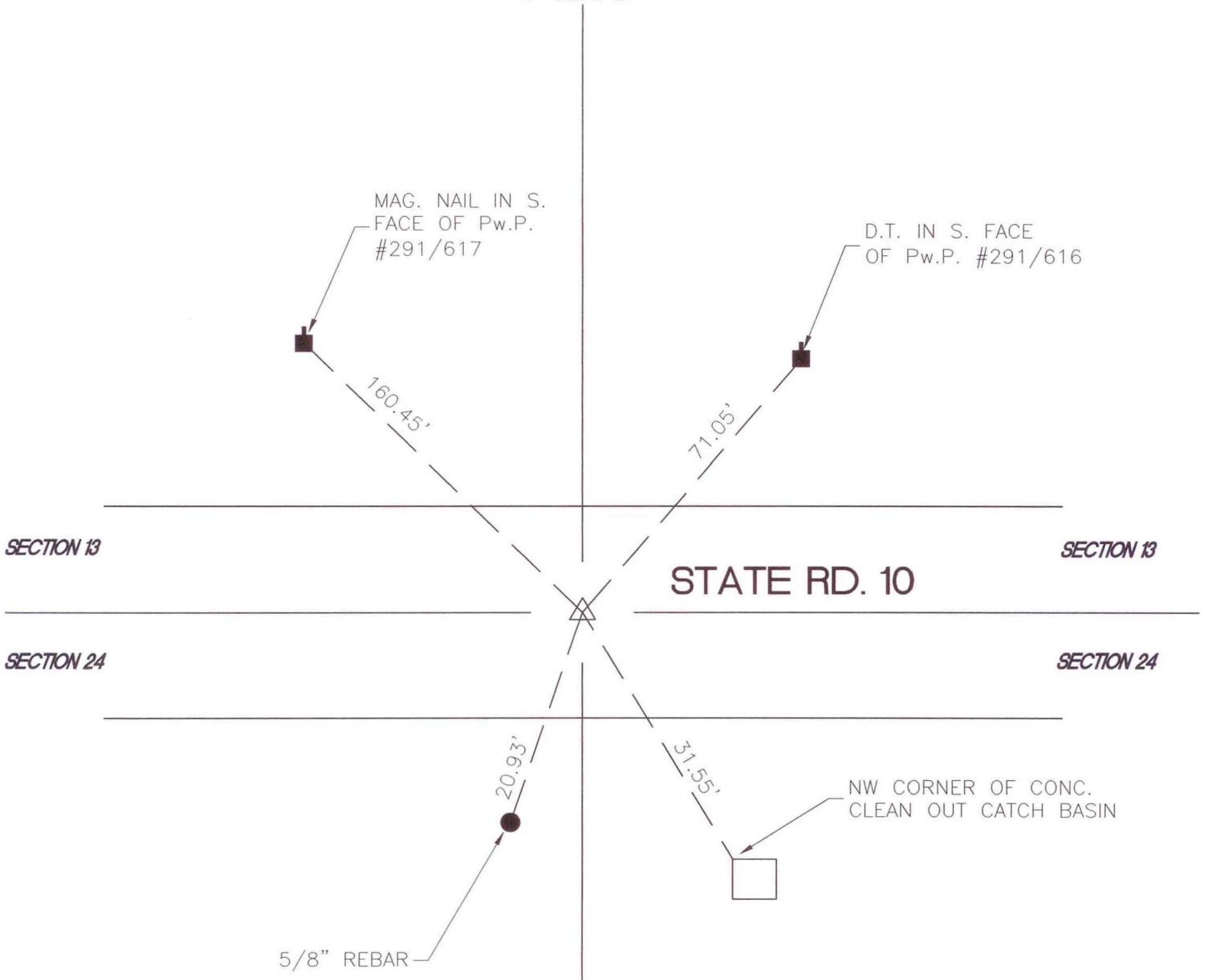


WAYNE TOWNSHIP

T 32 N, R 3 W

N23



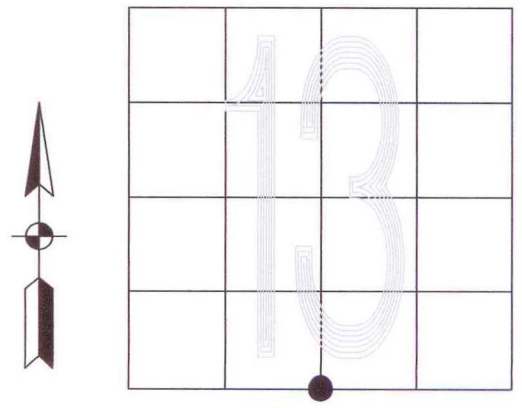
MONUMENT: (F) BOLT

CORNER OF: RECORD USE

PARTY: VHJ, DWC, BJ

DATE: 3/12/03

COMMENTS: ON CENTERLINE OF STATE ROAD 10



CORNER LOCATION IN THE SECTION