

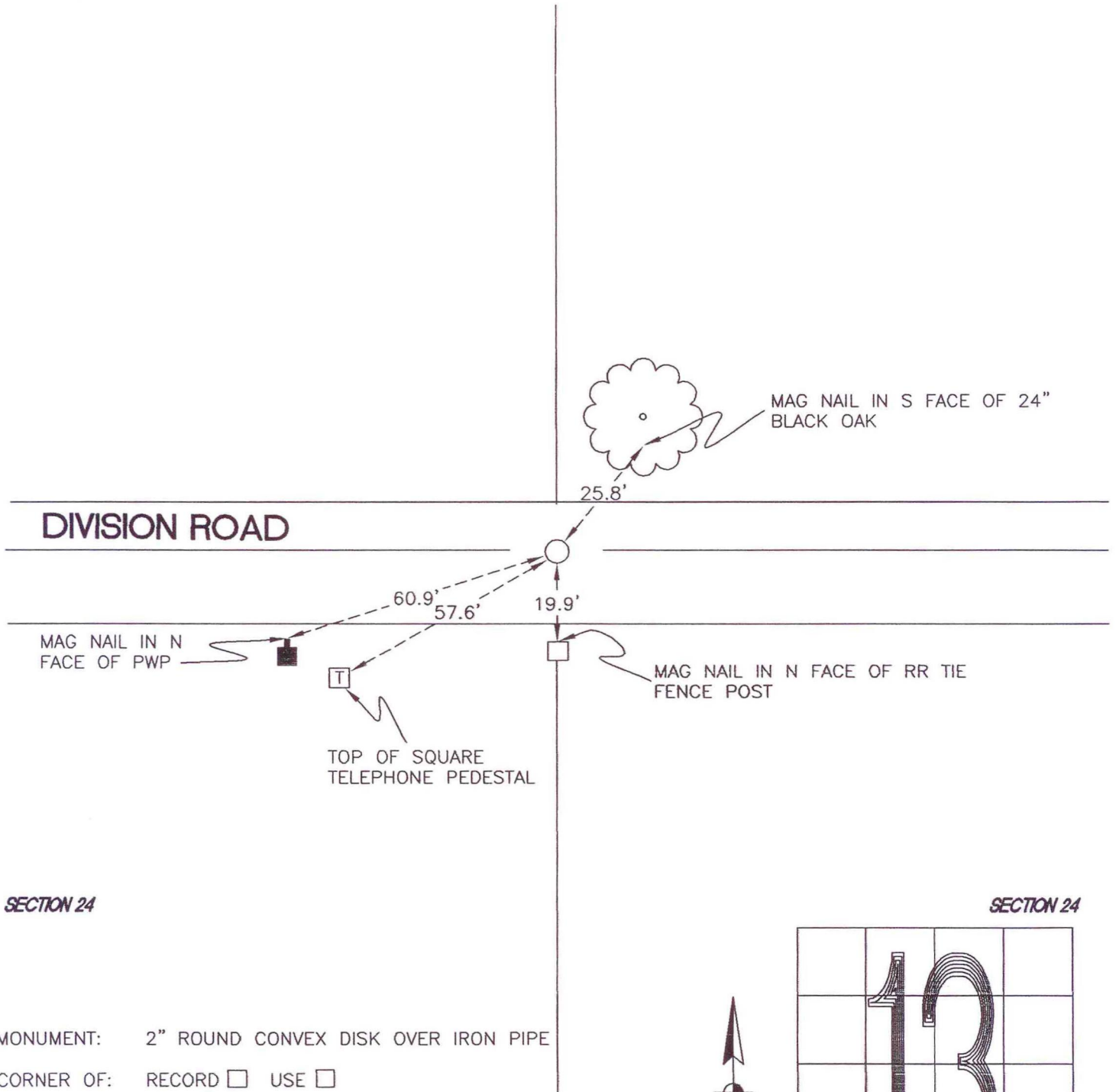
# WASHINGTON TOWNSHIP

T 33 N, R 1 W

## N23

SECTION 13

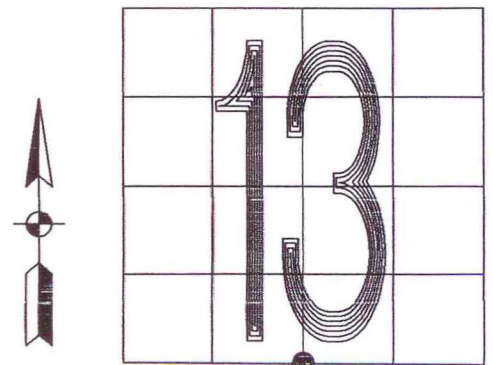
SECTION 13



SECTION 24

SECTION 24

MONUMENT: 2" ROUND CONVEX DISK OVER IRON PIPE  
 CORNER OF: RECORD  USE   
 PARTY: JL/PM  
 DATE: 11-6-2007  
 COMMENTS: 2" BELOW GRADE, 2.5' N OF  $\oslash$  OF DIVISION



CORNER LOCATION IN THE SECTION

# N23