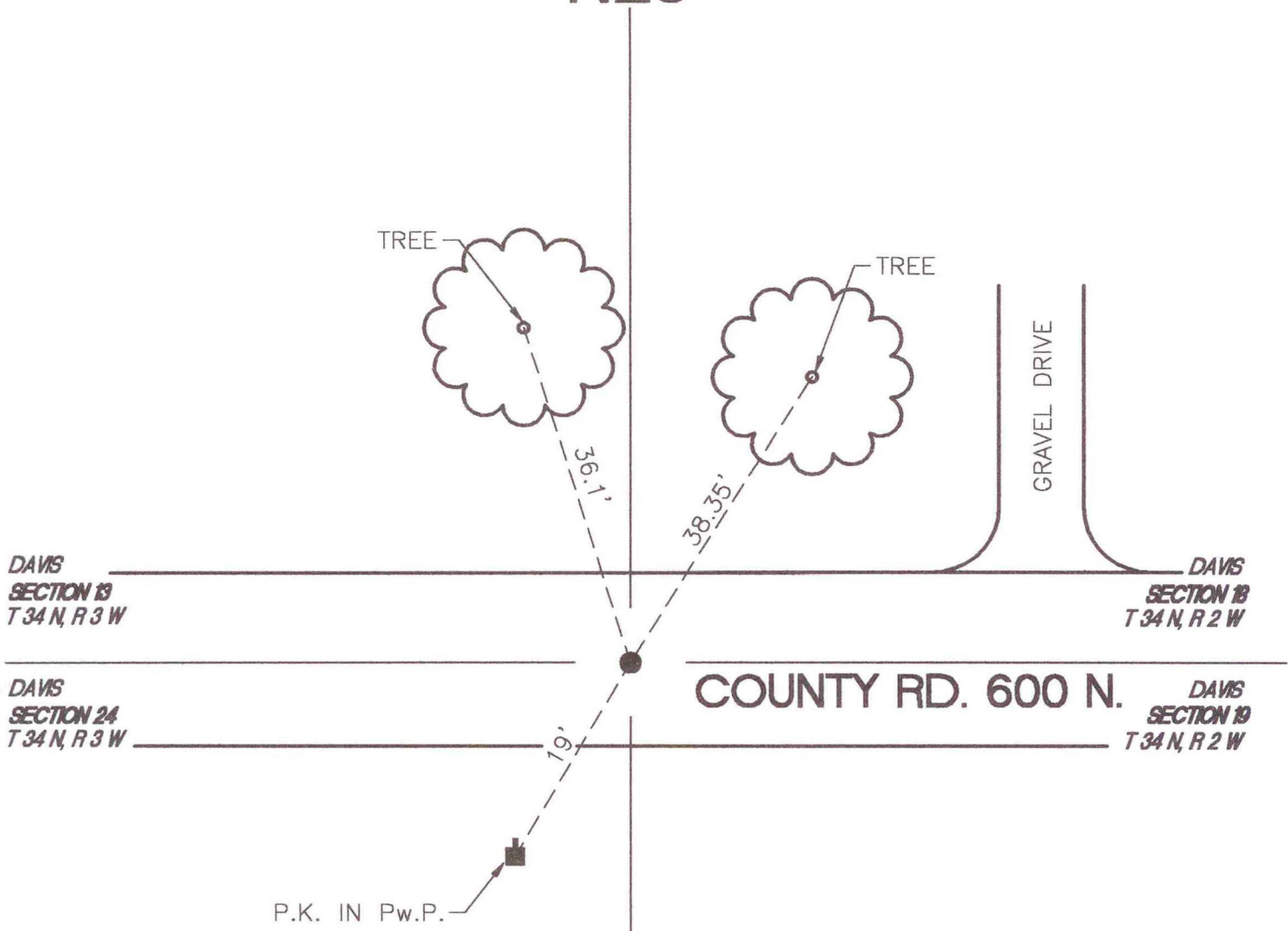


DAVIS TOWNSHIP
T 34 N, R 3 W
N25



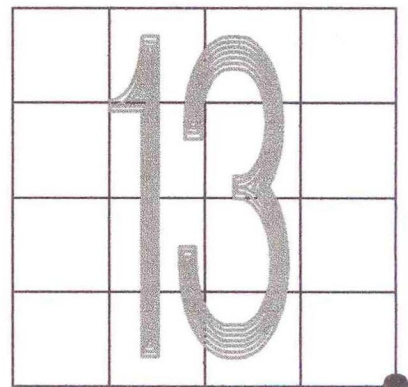
MONUMENT: IRON ROD

CORNER OF: RECORD USE

PARTY: DWC / DT

DATE: 7-95

COMMENTS: IRON ROD IS 2'± SOUTH OF ROAD CENTERLINE



CORNER LOCATION IN THE SECTION