

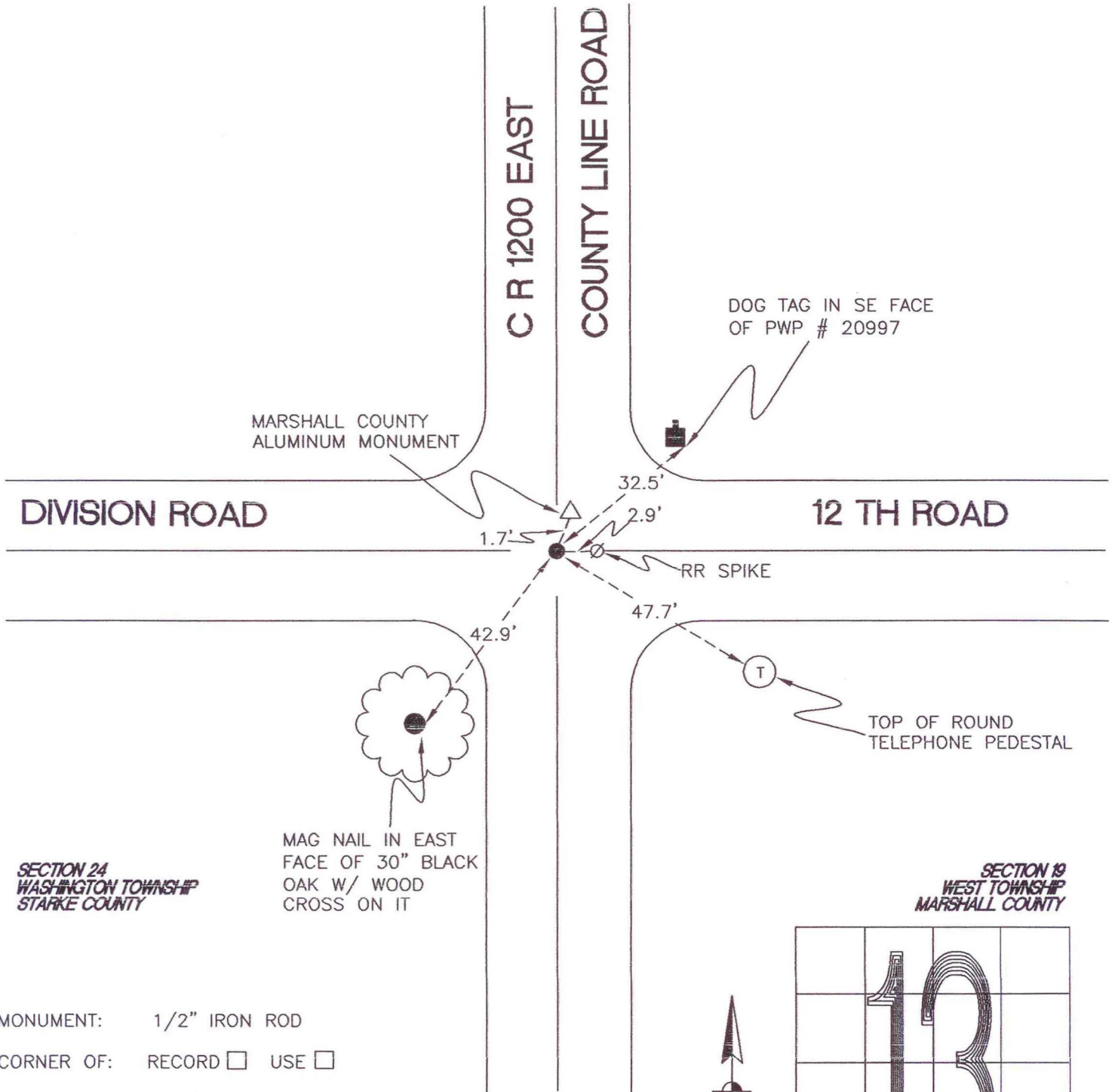
WASHINGTON TOWNSHIP

T 33 N, R 1 W

N25

STARKE COUNTY
WASHINGTON TOWNSHIP
SECTION 13

MARSHALL COUNTY
WEST TOWNSHIP
SECTION 18



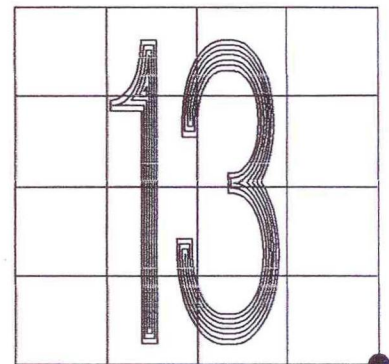
SECTION 24
WASHINGTON TOWNSHIP
STARKE COUNTY

MAG NAIL IN EAST
FACE OF 30" BLACK
OAK W/ WOOD
CROSS ON IT

SECTION 18
WEST TOWNSHIP
MARSHALL COUNTY

MONUMENT: 1/2" IRON ROD
CORNER OF: RECORD USE
PARTY: DPS/JL
DATE: 2-7-2008

COMMENTS: BRASS PLATE THAT WAS FOUND IN 1983 WAS REMOVED BY MARSHALL COUNTY IN 1988 LEAVING ONLY THE 1/2" IRON ROD THE PLATE WAS CONNECTED TO. AT THAT TIME THEY INSTALLED THEIR ALUMINUM MONUMENT TO THE NORTH OF THE STARKE COUNTY MONUMENT.



CORNER LOCATION IN THE SECTION

N25