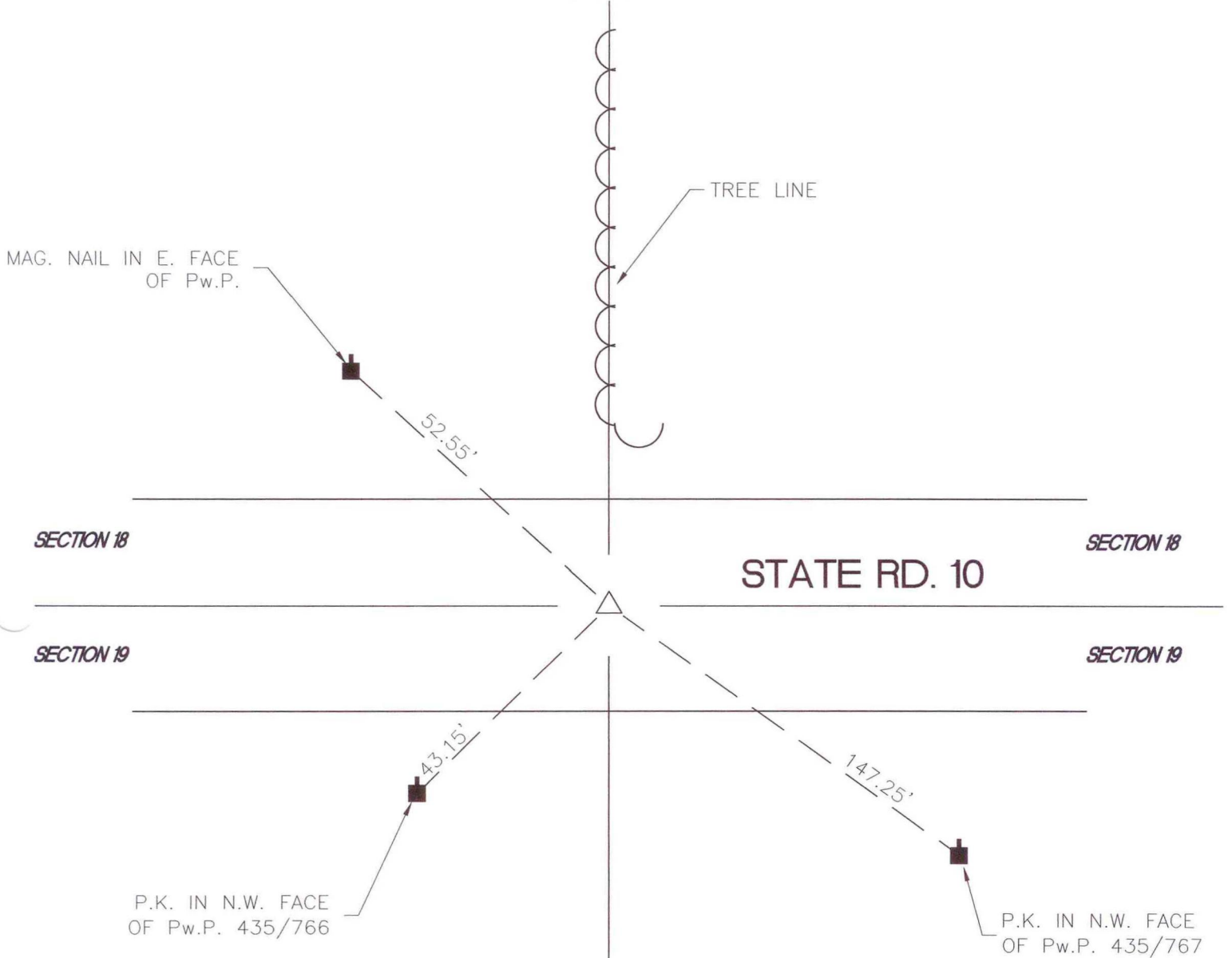


WAYNE TOWNSHIP

T 32 N, R 3 W

N3



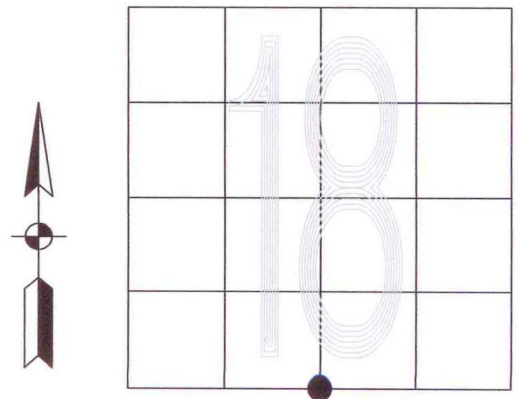
MONUMENT: R.R. CROSSING BOLT

CORNER OF: RECORD USE

PARTY: VHJ, DWC, BJ

DATE: 3/12/03

COMMENTS: 0.3' BELOW PAVEMENT



CORNER LOCATION IN THE SECTION