

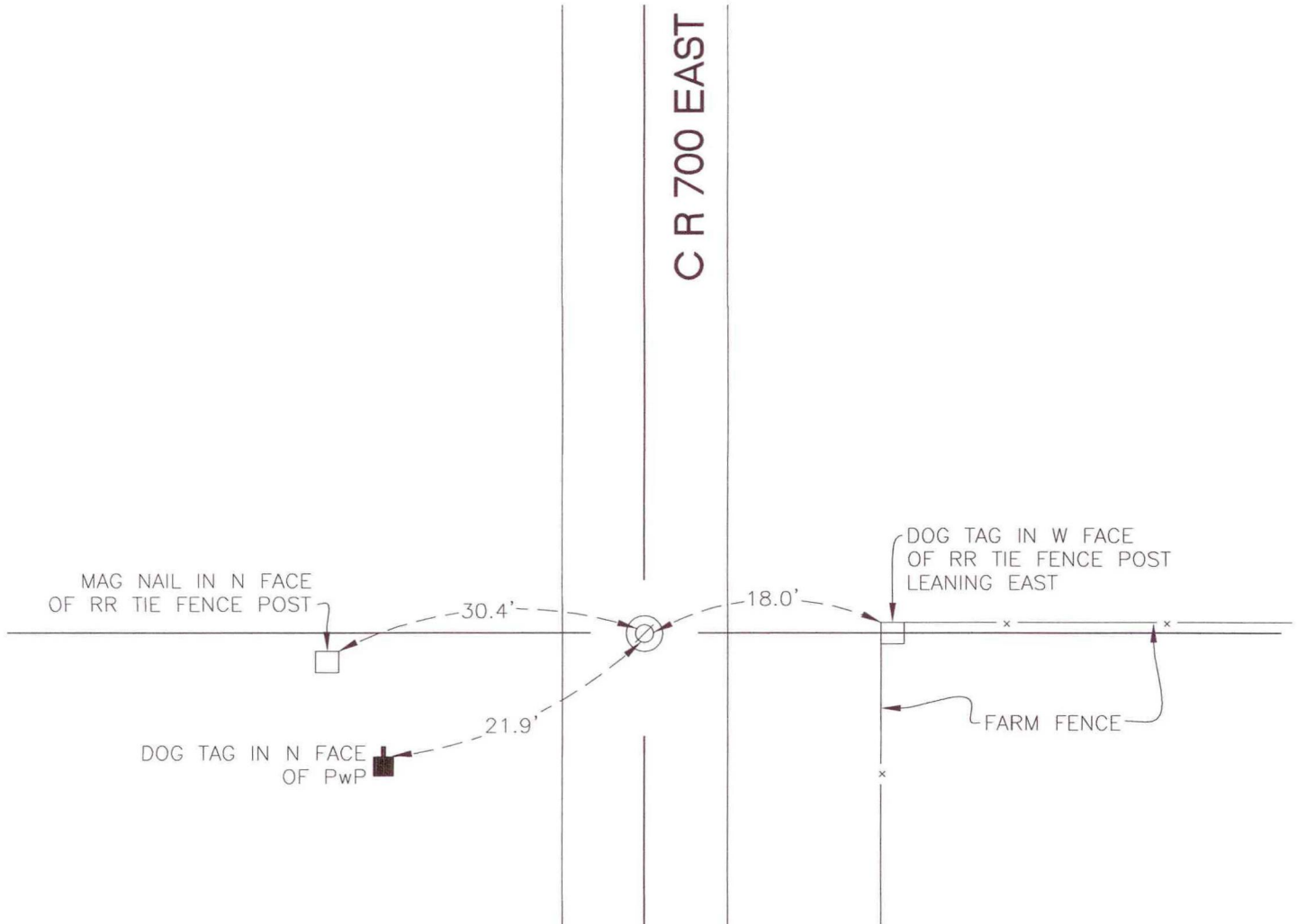
NORTH BEND TOWNSHIP

T 32 N, R 1 W

N5

SECTION 18

SECTION 17



SECTION 19

SECTION 20

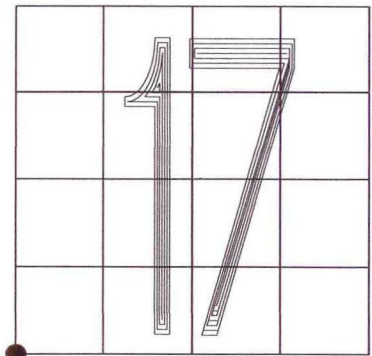
MONUMENT: RAILROAD SPIKE IN 2" IRON PIPE

CORNER OF: RECORD USE

PARTY: DWC/JL

DATE: 11-26-2008

COMMENTS: 3" BELOW GRADE
2' W OF ϕ OF 700 E



CORNER LOCATION IN THE SECTION

N5