

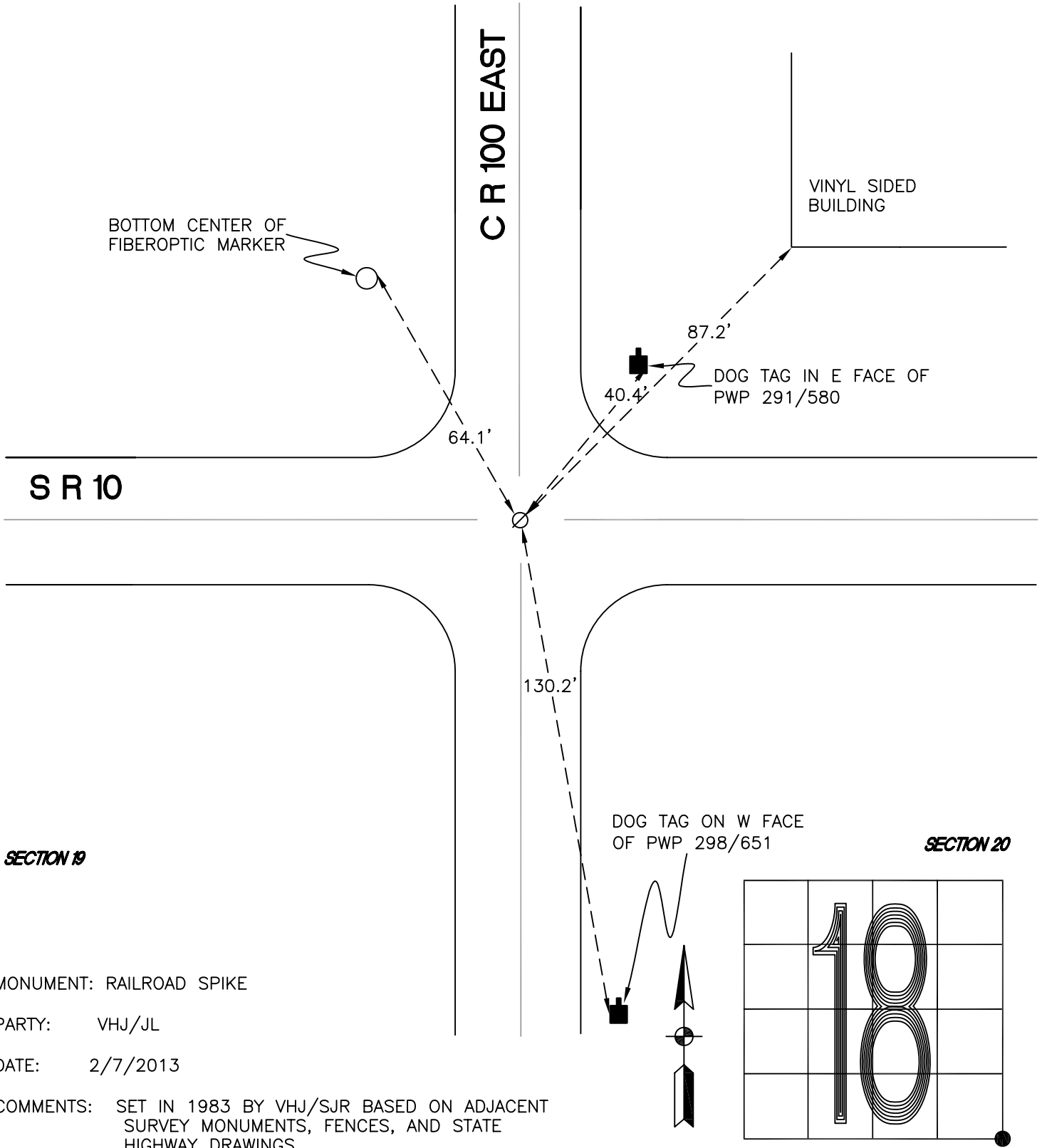
CALIFORNIA TOWNSHIP

T 32 N, R 2 W

N5

SECTION 18

SECTION 17



S R 10

C R 100 EAST

BOTTOM CENTER OF FIBEROPTIC MARKER

VINYL SIDED BUILDING

87.2'

40.4'

DOG TAG IN E FACE OF PWP 291/580

64.1'

130.2'

DOG TAG ON W FACE OF PWP 298/651

SECTION 20

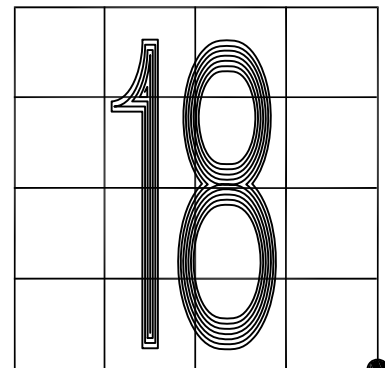
SECTION 19

MONUMENT: RAILROAD SPIKE

PARTY: VHJ/JL

DATE: 2/7/2013

COMMENTS: SET IN 1983 BY VHJ/SJR BASED ON ADJACENT SURVEY MONUMENTS, FENCES, AND STATE HIGHWAY DRAWINGS.



CORNER LOCATION IN THE SECTION

N5