

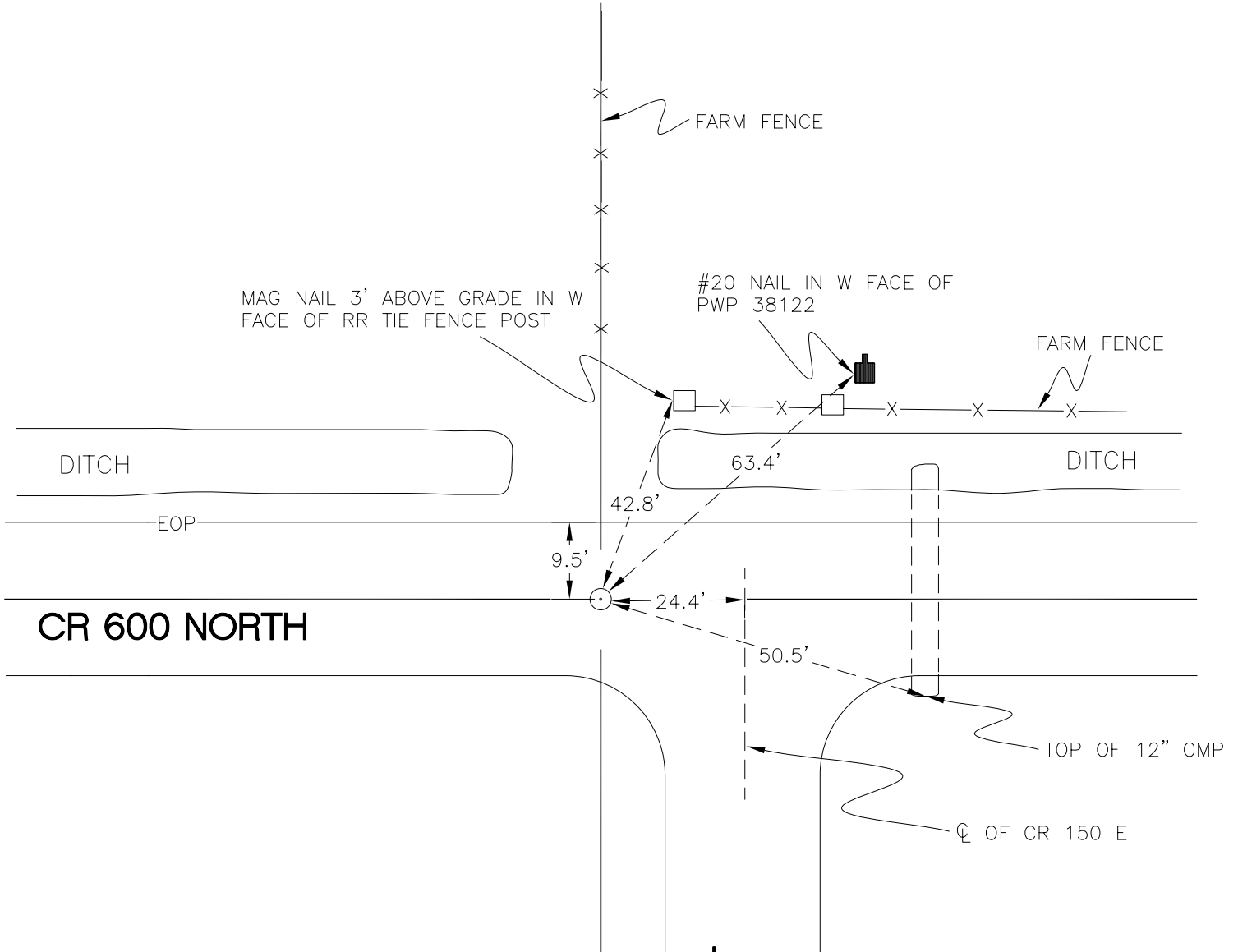
DAVIS TOWNSHIP

T 34 N, R 2 W

N7

SECTION 17

SECTION 17



SECTION 20

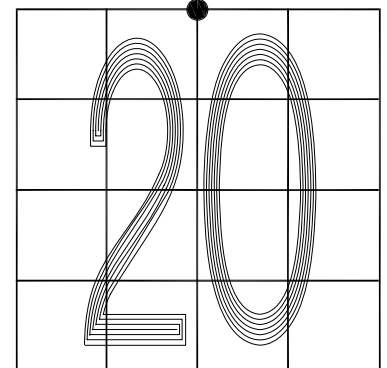
SECTION 20

MONUMENT: RAIL BOLT

PARTY: DPS/JL

DATE: 3/17/16

COMMENTS: ESTABLISHED BY GRAND KANKAKEE SURVEY IN SURVEY # G02-180. FOUND BY DPS/JL IN 2009.



CORNER LOCATION IN THE SECTION

N7