

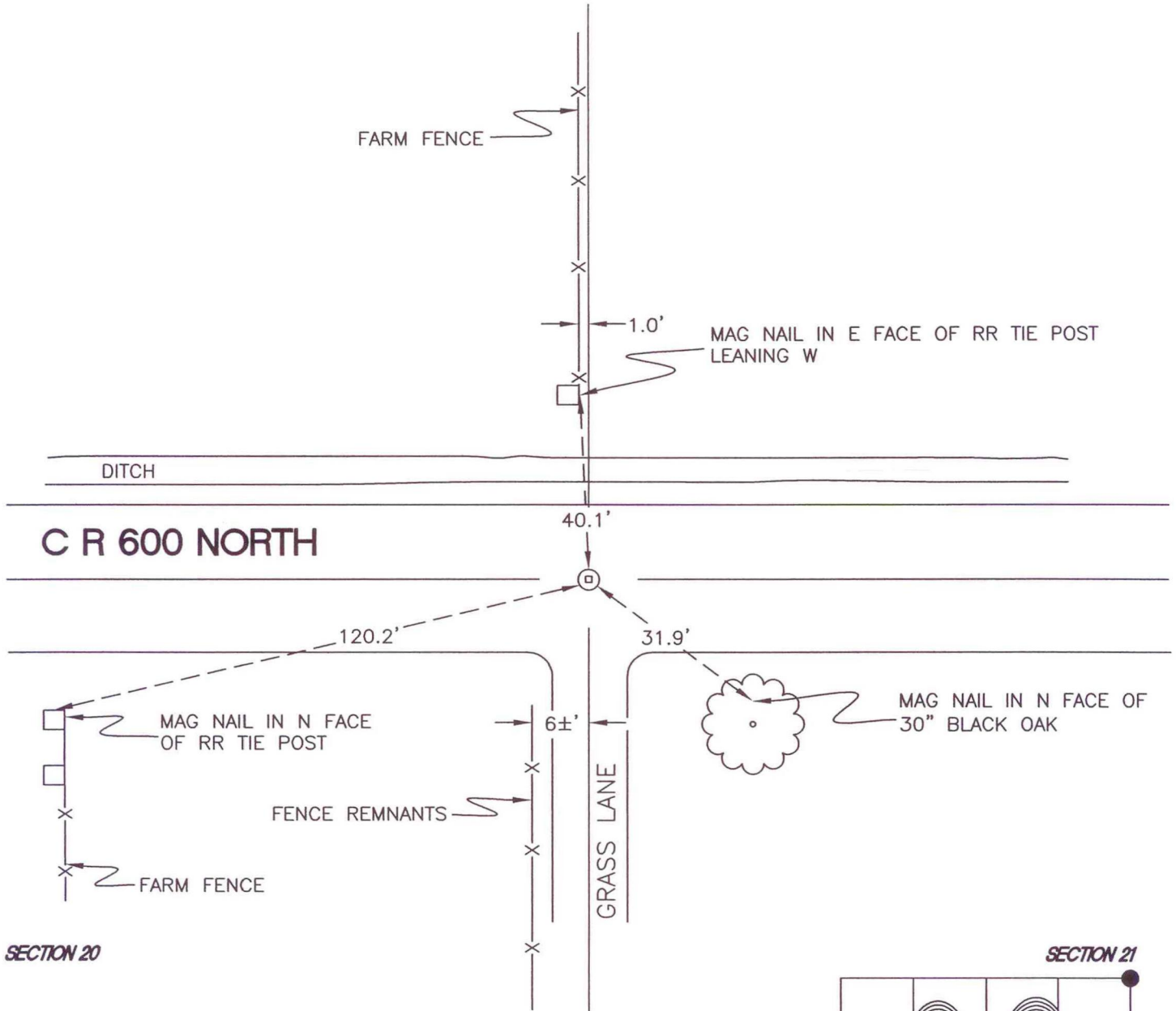
DAVIS TOWNSHIP

T 34 N, R 2 W

N9

SECTION 17

SECTION 16



SECTION 20

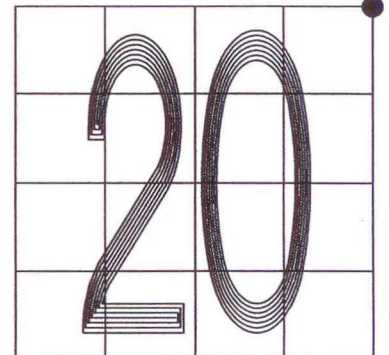
SECTION 21

MONUMENT: RR CROSSING BOLT

PARTY: DPS/JL

DATE: 10/5/2009

COMMENTS: USED BY WIGHTMAN CRAMER IN SURVEY # 98327,
GRAND KANKAKEE SURVEY IN SURVEY #G02-180,
AND TERRITORIAL ENGINEERING IN SURVEY # 08-120.



CORNER LOCATION IN THE SECTION

N9