

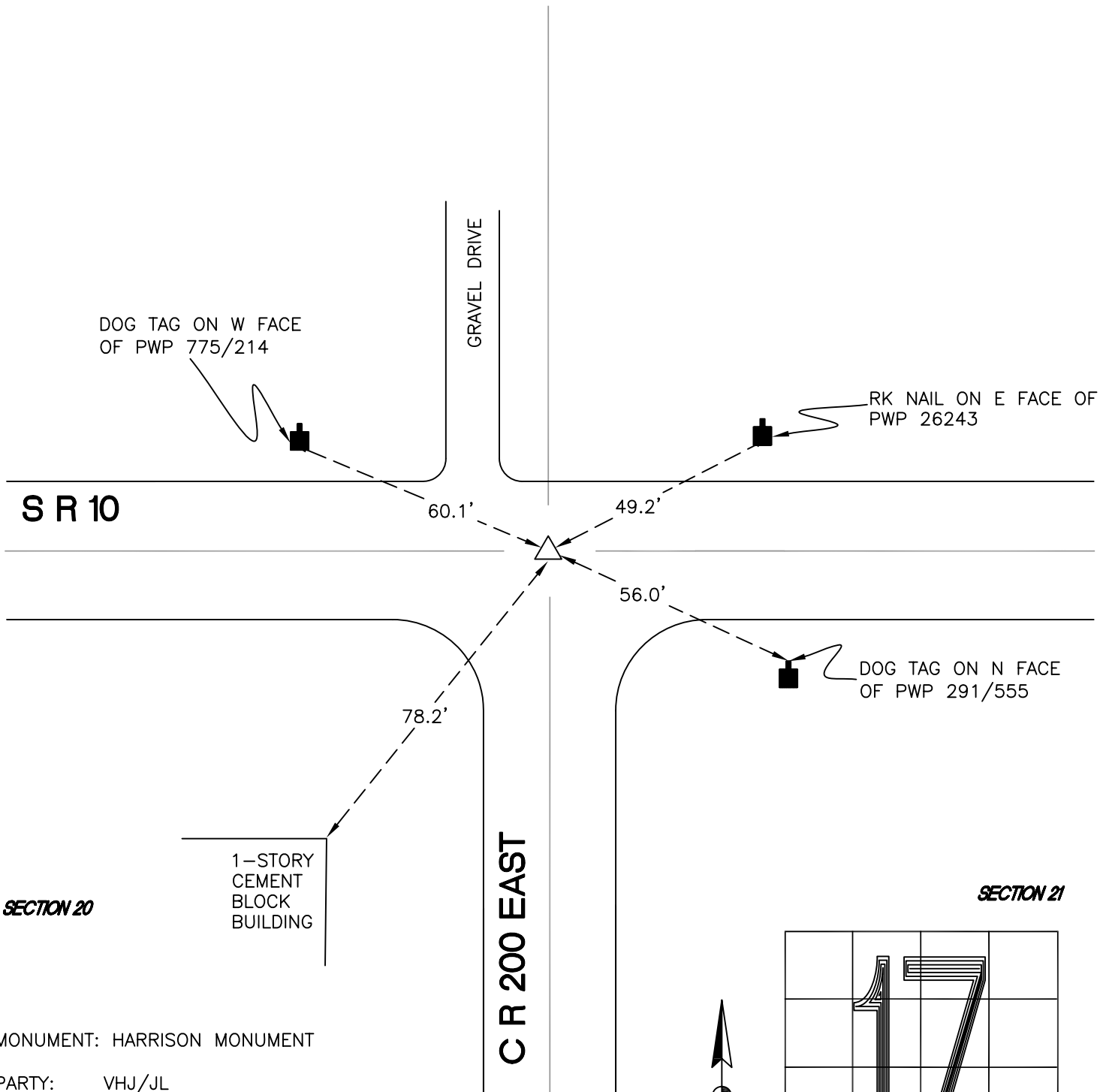
CALIFORNIA TOWNSHIP

T 32 N, R 2 W

N9

SECTION 17

SECTION 16

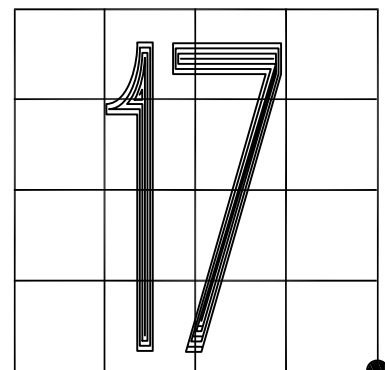


MONUMENT: HARRISON MONUMENT

PARTY: VHJ/JL

DATE: 3/7/2013

COMMENTS: SET BY INDOT AFTER REPAVING.
REPLACES CROSSING BOLT SET BY
DWC/AW IN 1991.



CORNER LOCATION IN THE SECTION

N9